

Merillat® Basics™

Product Specifications.

the dream kitchen for the real world.



Merillat.



Merillat.

Make perfect sense.

Basics™

TABLE OF CONTENTS

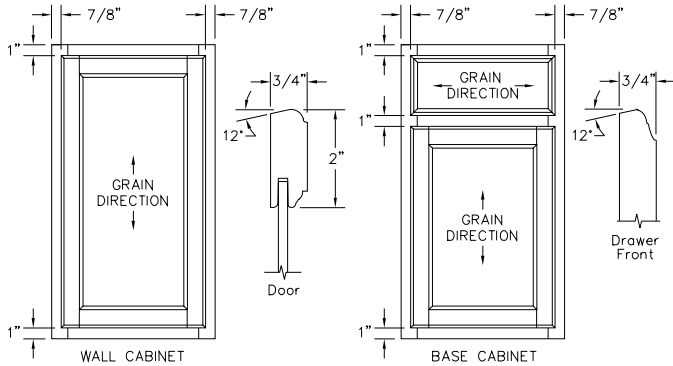
	Page
Door Styles and Finishes	4, 5
Wall Cabinets	6 - 12
Bookcases	13
Base Cabinets	14 - 17
Universal Cabinets	18
Tall Cabinets	19 - 20
Vanity Cabinets	21 - 23
DeNova Beginnings™ Vanity Countertops	24
Accessories	24 - 28
Replacement & Repair Parts	29
Replacement Door, Prep for Insert	31
Warranty	32
DeNova Beginnings™ Countertop Warranty	33
Index	34
Product Advisories	35



OAK DOOR STYLES

BIRCH DOOR STYLES

COLONY



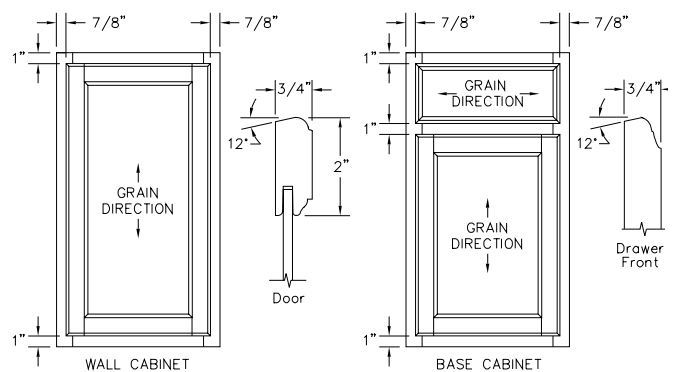
AVAILABLE FINISHES:

Sunrise
Eventide

HINGES: Concealed
Traditional Overlay

Square, flat panel, five piece door with solid white oak front. The frame is 3/4" solid oak joined with mortise and tenon construction. The center panel is 3/16" oak veneer applied to a MDF or engineered wood core. Top and bottom edges of doors and drawer fronts have a reverse bevel making hardware optional. Natural Maple laminate interior, shelves and drawers.

COLONY



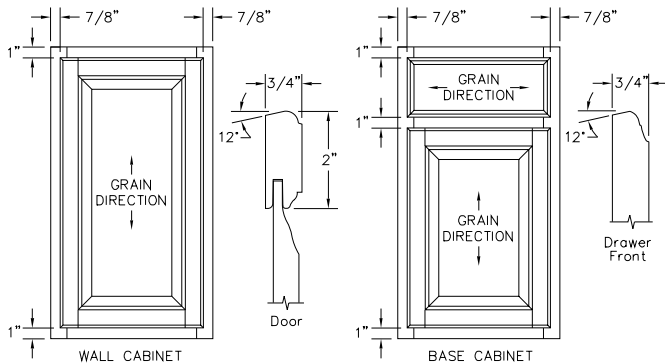
AVAILABLE FINISHES:

Cinnamon	Cinnamon/Licorice	Clove
Clove/Licorice	Dawn	Dawn/Mocha
Mirage	Mirage/Mocha	Twilight

HINGES: Concealed
Traditional Overlay

Square, flat panel, five piece door with solid birch front. The frame is 3/4" solid hardwood joined with mortise and tenon construction. The center panel is 3/16" birch veneer applied to a MDF or engineered wood core. Top and bottom edges of doors and drawer fronts have a reverse bevel making hardware optional. Natural Maple laminate interior, shelves and drawers.

HOMESTEAD



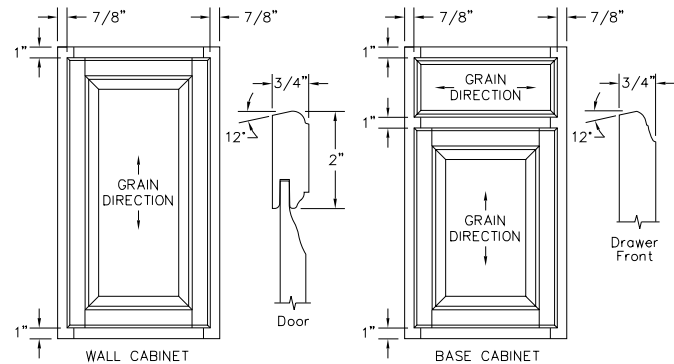
AVAILABLE FINISHES:

Sunrise
Eventide

HINGES: Concealed
Traditional Overlay

Square, raised panel, five piece door with solid white oak front. The frame is 3/4" solid oak joined with mortise and tenon construction. Door panel is 1/2" oak veneer applied to a MDF or engineered wood core. Top and bottom edges of doors and drawer fronts have a reverse bevel making hardware optional. Natural Maple laminate interior, shelves and drawers.

HOMESTEAD



AVAILABLE FINISHES:

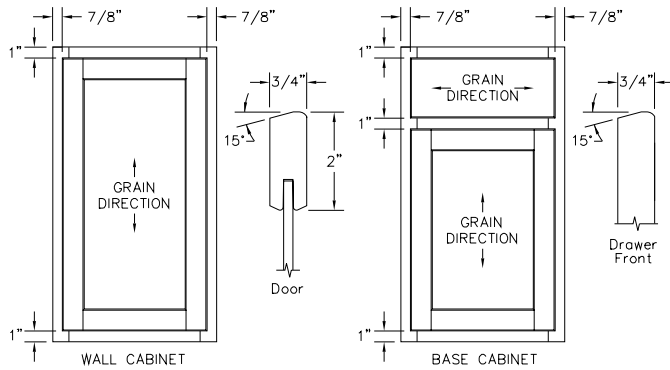
Cinnamon	Cinnamon/Licorice	Clove
Clove/Licorice	Dawn	Dawn/Mocha
Mirage	Mirage/Mocha	Twilight

HINGES: Concealed
Traditional Overlay

Square, raised panel, five piece door with solid birch front. The frame is 3/4" solid hardwood joined with mortise and tenon construction. Door panel is 1/2" birch veneer applied to a MDF or engineered wood core. Top and bottom edges of doors and drawer fronts have a reverse bevel making hardware optional. Natural Maple laminate interior, shelves and drawers.

BIRCH DOOR STYLE

COLLINS



AVAILABLE FINISHES:

Cinnamon Clove Dawn
Mirage Twilight

HINGES: Concealed
Traditional Overlay

Square, flat panel shaker style door with solid birch front. The frame is 3/4" solid hardwood joined with mortise and tenon construction. Door panel is 3/16" birch veneer applied to a MDF or engineered wood core. Top and bottom edges of doors and drawer fronts have a reverse bevel making hardware optional. Natural Maple laminate interior, shelves and drawers.

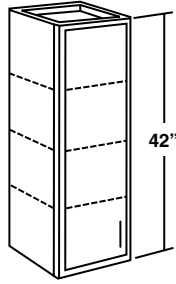
WALL CABINETS

12" DEEP — All single door wall cabinets are invertible for L or R hinging

**SINGLE DOOR
(42" HIGH)**

- W942
- W1242
- W1542
- W1842
- W2142
- W2442

See Price Book page 3.

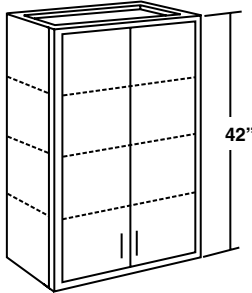


- One door
- Three adjustable shelves

**BUTT DOORS
(42" HIGH)**

- W2742B
- W3042B

See Price Book page 3.

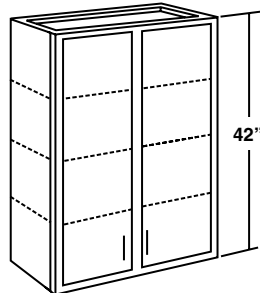


- Butt doors
- No center mullion
- Three adjustable shelves

**DOUBLE DOOR
(42" HIGH)**

- W3342
- W3642
- W3942
- W4242

See Price Book page 3.



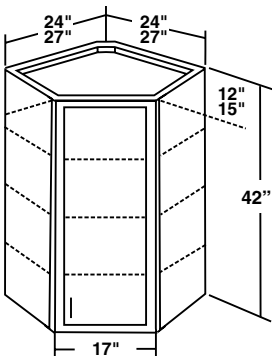
- Two doors
- Three adjustable shelves

**WALL ANGLE
(42" HIGH)**

12" deep
WA2442

15" deep
WA2742

See Price Book page 3.

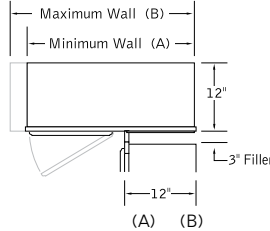


- One door
 - Three adjustable shelves
 - Install LS2 leaving top shelf in cabinet
 - Not available in special depths
- Note:** Two revolving shelves available in kit form (LS2 - Must order separately)

CAUTION INSTALLER: Wall Angle cabinets require additional support. They should be screwed on both sides to adjacent cabinets, soffit or ceiling joist.

**BLIND CORNER SINGLE DOOR
(42" HIGH)**

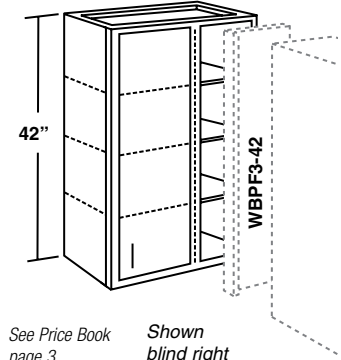
- WBC 24/2742BL or BR
- WBC 30/3342BL or BR
- WBC 36/3942BL or BR



- WBC 24/2742-- 24" 26⁷/₈"
- WBC 30/3342-- 30" 32⁷/₈"
- WBC 36/3942-- 36" 38⁷/₈"

See installation example on page 9

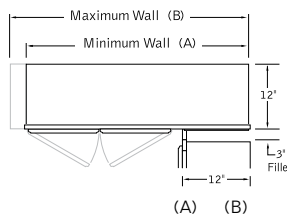
- Specify blind left (BL) or blind right (BR)
- One door
- Invertible for L or R blind corner
- Three adjustable shelves
- Order blind panel with 3" filler WBPF3-42 separately



See Price Book page 3. Shown blind right

**BLIND CORNER BUTT DOORS
(42" HIGH)**

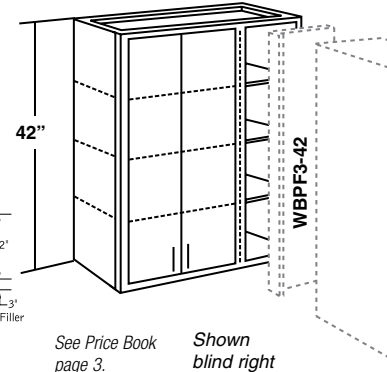
- WBC 39/4242BBL or BBR
- WBC 42/4542BBL or BBR



- WBC 39/4242B-- 39" 41⁷/₈"
- WBC 42/4542B-- 42" 44⁷/₈"

See installation example on page 9

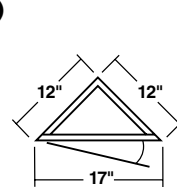
- Specify blind left (BL) or blind right (BR)
- Butt doors
- No center mullion
- Invertible for L or R blind corner
- Three adjustable shelves
- Order blind panel with 3" filler WBPF3-42 separately



See Price Book page 3. Shown blind right

**WALL CORNER ANGLE
(42" HIGH)**

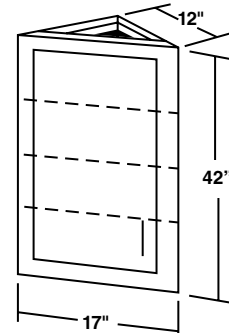
WCA 1242



Top View

See Price Book page 3.

- One door
- Three adjustable shelves
- Not available in special depths



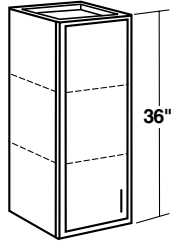
All single door wall cabinets are invertible for L or R hinging 12" DEEP

WALL CABINETS

SINGLE DOOR (36" HIGH)

W936
W1236
W1536
W1836
W2136
W2436

See Price Book
page 3.

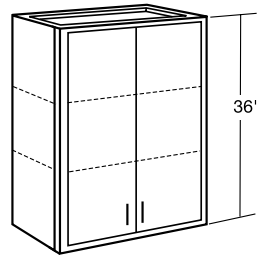


- One door
- Two adjustable shelves

BUTT DOORS (36" HIGH)

W2736B
W3036B

See Price Book
page 4.

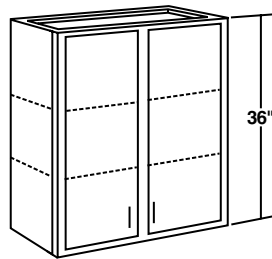


- Butt doors
- No center mullion
- Two adjustable shelves

DOUBLE DOOR (36" HIGH)

W3336
W3636
W3936
W4236

See Price Book
page 4.



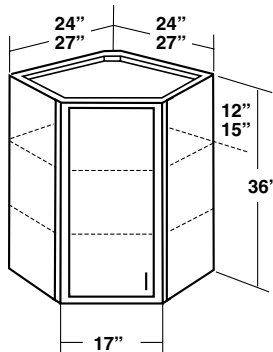
- Two doors
- Two adjustable shelves

WALL ANGLE (36" HIGH)

12" deep
WA2436

15" deep
WA2736

See Price Book
page 4.

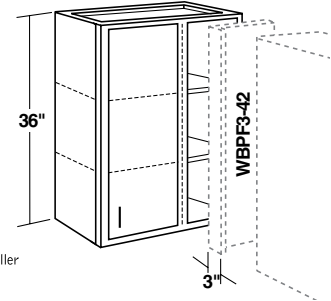
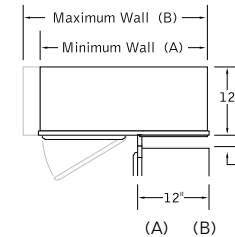


- One door
 - Two adjustable shelves
 - Install LS2 leaving top shelf in cabinet
 - Not available in special depths
- Note:** Two revolving shelves available in kit form (LS2 - Must order separately)

CAUTION INSTALLER: Wall Angle cabinets require additional support. They should be screwed on both sides to adjacent cabinets, soffit or ceiling joist.

BLIND CORNER SINGLE DOOR (36" HIGH)

WBC 24/2736BL or BR
WBC 30/3336BL or BR
WBC 36/3936BL or BR



See Price Book
page 4. Shown
blind right

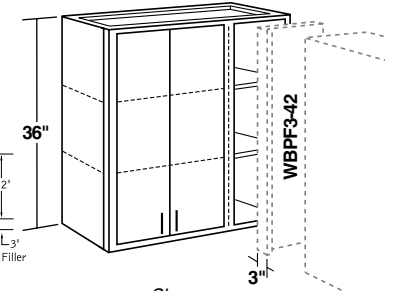
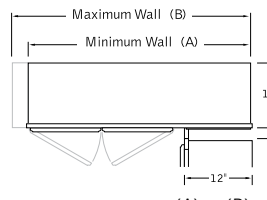
WBC 24/2736--	24"	26 ⁷ / ₈ "
WBC 30/3336--	30"	32 ⁷ / ₈ "
WBC 36/3936--	36"	38 ⁷ / ₈ "

See installation example
on page 9

- Specify blind left (BL) or blind right (BR)
- One door
- Invertible for L or R blind corner
- Two adjustable shelves
- Order blind panel with 3" filler WBPF3-42 separately

BLIND CORNER BUTT DOORS (36" HIGH)

WBC 39/4236BBL or BBR
WBC 42/4536BBL or BBR



See Price Book
page 4. Shown
blind right

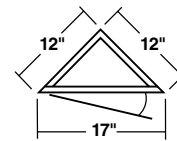
WBC 39/4236B--	39"	41 ⁷ / ₈ "
WBC 42/4536B--	42"	44 ⁷ / ₈ "

See installation example
on page 9

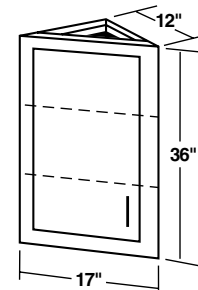
- Specify blind left (BL) or blind right (BR)
- Butt doors
- No center mullion
- Invertible for L or R blind corner
- Two adjustable shelves
- Order blind panel with 3" filler WBPF3-42 separately

WALL CORNER ANGLE (36" HIGH)

WCA1236



Top View
See Price Book
page 4.



- One door
- Two adjustable shelves
- Not available in special depths

CAUTION INSTALLER: Installation of a wall cabinet by itself is not recommended unless additional support is provided such as attachment to a soffit. See cabinet installation guide for specific instructions.

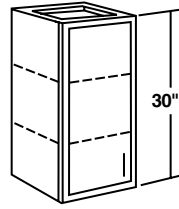
WALL CABINETS

12" DEEP ————— All single door wall cabinets are invertible for L or R hinging

**SINGLE DOOR
(30" HIGH)**

- W930
- W1230
- W1530
- W1830
- W2130
- W2430

See Price Book page 4.

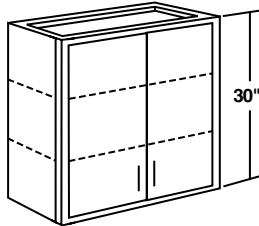


- One door
- Two adjustable shelves

**BUTT DOORS
(30" HIGH)**

- W2430B
- W2730B
- W3030B

See Price Book page 4.

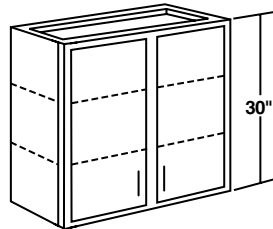


- Butt doors
- No center mullion
- Two adjustable shelves

**DOUBLE DOOR
(30" HIGH)**

- W3330
- W3630
- W3930
- W4230
- W4530
- W4830

See Price Book page 4.



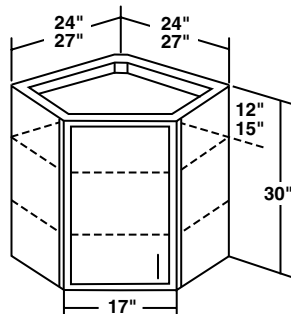
- Two doors
- Two adjustable shelves

**WALL ANGLE
(30" HIGH)**

12" deep
WA2430

See Price Book page 5.

15" deep
WA2730



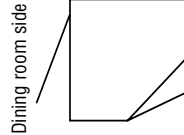
- One door
- Two adjustable shelves
- Not available in special depths

Note: Two revolving shelves available in kit form (LS2 - Must order separately)

CAUTION INSTALLER: Wall Angle cabinets require additional support. They should be screwed on both sides to adjacent cabinets, soffit or ceiling joist.

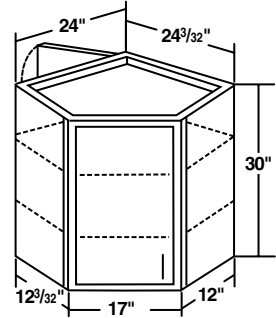
**PENINSULA WALL ANGLE
(30" HIGH)**

PWA2430



See Price Book page 5.

Top View PWA2430
One door dining room side



- Two doors, one each side
- Two adjustable shelves
- Invertible for L or R hand application
- Not available in special depths

Note: Two revolving shelves available in kit form (LS2 - Must order separately)

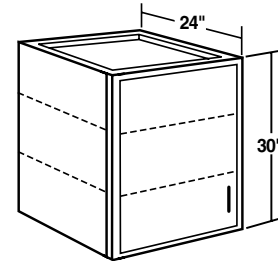
WARNING Peninsula Wall Cabinets require support every 16" of cabinet width on both faces of the cabinet. Use #10 or larger truss/pan head screws. Screws should penetrate 1-1/2" minimum into solid wood (ceiling joist or soffit frame)

CAUTION INSTALLER: Corner diagonal wall cabinets require additional support. They should be screwed on both sides to adjacent cabinets, soffit or ceiling joist.

**WALL REFRIGERATOR 24" DEEP SINGLE DOOR
(30" HIGH)**

- WR1830
- WR2430

See Price Book page 5

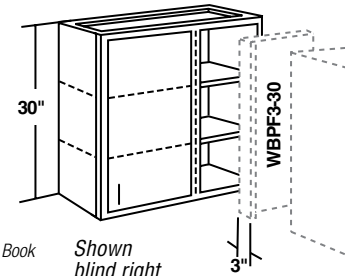


- One door
- Two adjustable shelves

CAUTION INSTALLER: 24" deep wall cabinets require additional support. They should be screwed on both sides to adjacent cabinets, soffit or ceiling joist.

**BLIND CORNER SINGLE DOOR
(30" HIGH)**

- WBC 24/2730BL or BR
- WBC 30/3330BL or BR
- WBC 33/3630BL or BR
- WBC 36/3930BL or BR

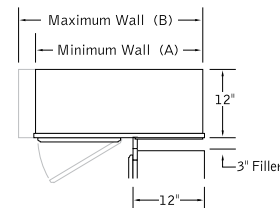


See Price Book page 5.

Shown blind right

	(A)	(B)
WBC 24/2730--	24"	26 7/8"
WBC 30/3330--	30"	32 7/8"
WBC 33/3630--	33"	35 7/8"
WBC 36/3930--	36"	38 7/8"

See installation example on page 9



- Specify blind left (BL) or blind right (BR)
- One door
- Two adjustable shelves
- Invertible for L or R blind corner
- Order blind panel with 3" filler WBPF3-30 separately

All single door wall cabinets are invertible for L or R hinging 12" DEEP

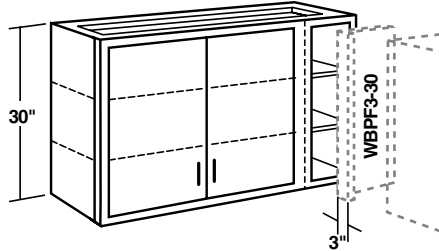
WALL CABINETS

BLIND CORNER BUTT DOORS AND DOUBLE DOOR (30" HIGH)

WBC 39/4230BBL or BBR
WBC 42/4530BBL or BBR
WBC 48/5130BL or BR

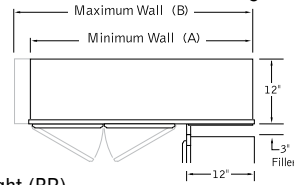
See Price Book page 5.

Shown blind right



	(A)	(B)
WBC 39/4230B--	39"	41 ⁷ / ₈ "
WBC 42/4530B--	42"	44 ⁷ / ₈ "
WBC 48/5130--	48"	50 ⁷ / ₈ "

See installation example below

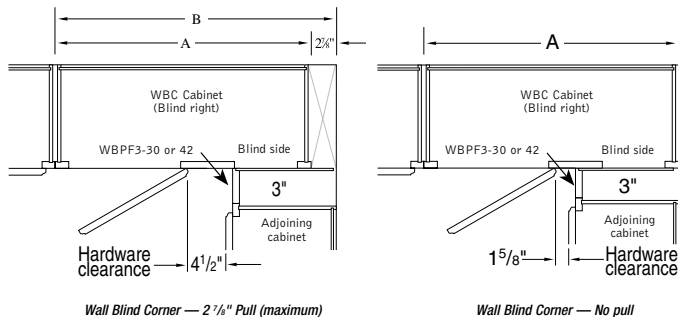


- Specify blind left (BL) or blind right (BR)
- Butt doors on WBC 39/4230B and WBC 42/4530B cabinets
- No center mullion on butt door cabinets
- Invertible for L or R blind corner
- Two adjustable shelves
- Order blind panel with 3" filler WBPF3-30 separately

INSTALLATION EXAMPLE WALL BLIND CORNER CABINET

Wall blind corner cabinets provide access to the corner space and permit adjustability of up to 2-7/8" to aid in the kitchen cabinet layout. The blind side corner (area of cabinet hidden by the end of the adjoining cabinet) may be changed from right hand to left hand by inverting the cabinet. "Pulling" the cabinet away from the corner and using the separately ordered WBPF3-30 or 42 panel/filler assembly provides clearance for opening doors when decorative hardware (pull/knobs) is used.

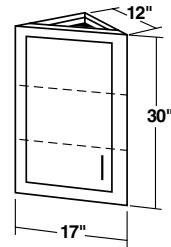
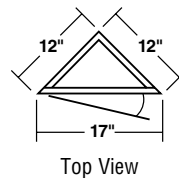
Wall Blind Corner	Actual Cabinet Width	Cabinet Height	(A) No Pull	(B) 2-7/8" Pull
WBC 24/27	24"	30", 36", 42"	24"	26 ⁷ / ₈ "
WBC 30/33	24"	30", 36", 42"	30"	32 ⁷ / ₈ "
WBC 33/36	33"	30"	33"	35 ⁷ / ₈ "
WBC 36/39	36"	30", 36", 42"	36"	38 ⁷ / ₈ "
WBC 39/42	39"	30", 36", 42"	39"	41 ⁷ / ₈ "
WBC 42/45	42"	30", 36", 42"	42"	44 ⁷ / ₈ "
WBC 48/51	48"	30"	48"	50 ⁷ / ₈ "



WALL CORNER ANGLE (30" HIGH)

WCA1230

See Price Book page 5.

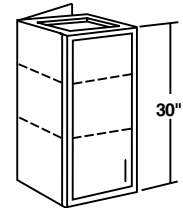
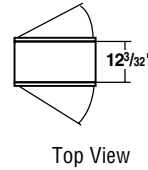


- One door
- Two adjustable shelves
- Not available in special depths

PENINSULA WALL SINGLE DOOR (30" HIGH)

PW1830
PW2130
PW2430

See Price Book page 5.



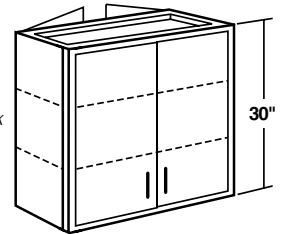
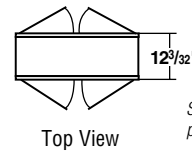
- Two doors, one door each side
- Two adjustable shelves
- 12-3/32" deep (excluding doors)
- Not available in special depths

WARNING Peninsula Wall Cabinets require support every 16" of cabinet width on both faces of the cabinet. Use #10 or larger screws. Screws should penetrate 1-1/2" minimum into solid wood (ceiling joist or soffit frame)

PENINSULA WALL BUTT DOORS (30" HIGH)

PW3030B

See Price Book page 5.



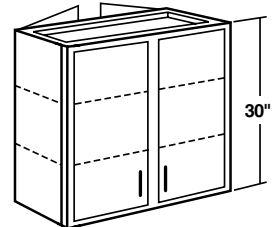
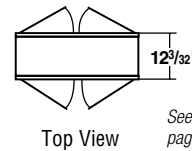
- Four Doors, two butt doors on each side
- No center mullion
- Two adjustable shelves
- 12-3/32" deep (excluding doors)
- Not available in special depths

WARNING Peninsula Wall Cabinets require support every 16" of cabinet width on both faces of the cabinet. Use #10 or larger truss/pan head screws. Screws should penetrate 1-1/2" minimum into solid wood (ceiling joist or soffit frame)

PENINSULA WALL DOUBLE DOOR (30" HIGH)

PW3630
PW4230

See Price Book page 5.



- Four doors, two each side
- Two adjustable shelves
- 12-3/32" deep (excluding doors)
- Not available in special depths

WARNING Peninsula Wall Cabinets require support every 16" of cabinet width on both faces of the cabinet. Use #10 or larger truss/pan head screws. Screws should penetrate 1-1/2" minimum into solid wood (ceiling joist or soffit frame)

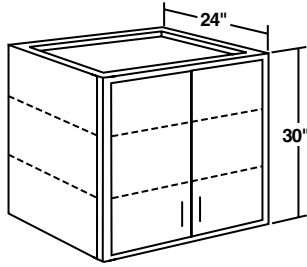
WALL CABINETS

12" DEEP ————— All single door wall cabinets are invertible for L or R hinging

WALL REFRIGERATOR 24" DEEP BUTT DOORS (30" HIGH)

WR2730B
WR3030B

See Price Book page 5.



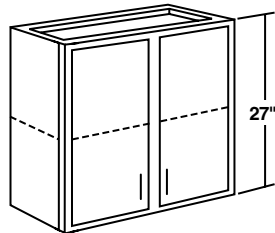
- Butt doors
- No center mullion
- Two adjustable shelves

CAUTION INSTALLER: 24" deep wall cabinets require additional support. They should be screwed on both sides to adjacent cabinet, wall, soffit or ceiling joist.

BUTT DOORS AND DOUBLE DOOR (27" HIGH)

W3027B
W3627

See Price Book page 6.

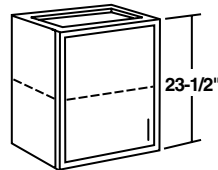


- Two doors, W3027B has butt doors, no center mullion
- One adjustable shelf

SINGLE DOOR (23 1/2" HIGH)

W1824
W2124
W2424

See Price Book page 6.

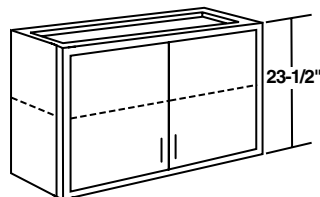


- One door
- One adjustable shelf

BUTT DOORS (23 1/2" HIGH)

W3024B

See Price Book page 6.

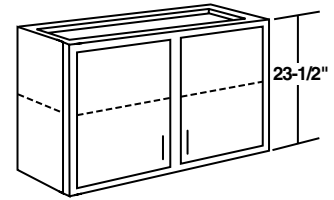


- Butt doors
- No center mullion
- One adjustable shelf

DOUBLE DOOR (23 1/2" HIGH)

W3324
W3624
W3924
W4224

See Price Book page 6.

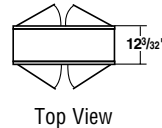


- Two doors
- One adjustable shelf

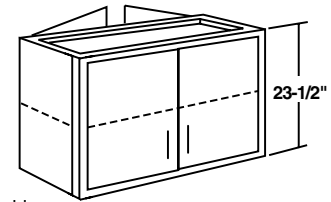
PENINSULA WALL BUTT DOORS (23 1/2" HIGH)

PW3024B

See Price Book page 6.



Top View



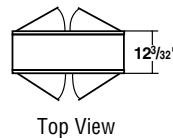
- Four doors, two butt doors on each side
- No center mullion
- One adjustable shelf
- 12-3/32" deep (excluding doors)
- Not available in special depths

WARNING Peninsula Wall Cabinets require support every 16" of cabinet width on both faces of the cabinet. Use #10 or larger truss/pan head screws. Screws should penetrate 1-1/2" minimum into solid wood (ceiling joist or soffit frame)

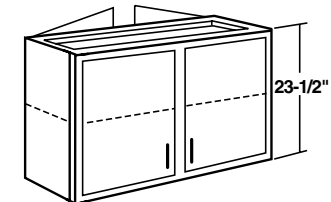
PENINSULA WALL DOUBLE DOOR (23 1/2" HIGH)

PW3624

See Price Book page 6.



Top View



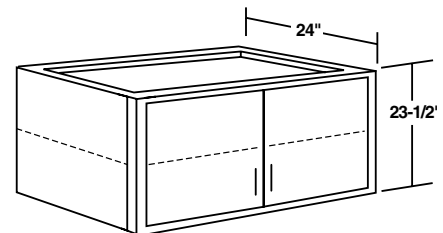
- 12-3/32" deep (excluding doors)
- Four doors, two doors on each side
- One adjustable shelf
- Not available in special depths

WARNING Peninsula Wall Cabinets require support every 16" of cabinet width on both faces of the cabinet. Use #10 or larger truss/pan head screws. Screws should penetrate 1-1/2" minimum into solid wood (ceiling joist or soffit frame)

WALL REFRIGERATOR 24" DEEP BUTT DOORS (23 1/2" HIGH)

WR3024B

See Price Book page 6.



- Butt doors
- No center mullion
- One adjustable shelf

CAUTION INSTALLER: 24" deep wall cabinets require additional support. They should be screwed on both sides to adjacent cabinets, wall, soffit or ceiling joist.

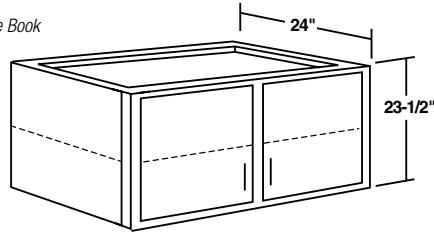
All single door wall cabinets are invertible for L or R hinging 12" DEEP

WALL CABINETS

WALL REFRIGERATOR 24" DEEP DOUBLE DOOR (23 1/2" HIGH)

WR3324
WR3624
WR3924

See Price Book
page 6.

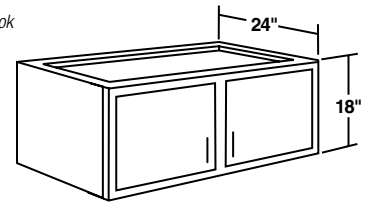


- Two doors
- One adjustable shelf

WALL REFRIGERATOR 24" DEEP DOUBLE DOOR (18" HIGH)

WR3318
WR3618
WR3918

See Price Book
page 7.



- Two doors
- No shelf

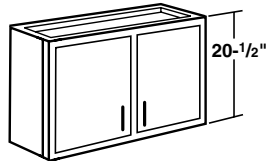
CAUTION INSTALLER: 24" deep wall cabinets require additional support. They should be screwed on both sides to adjacent cabinets, wall, soffit or ceiling joist.

CAUTION INSTALLER: 24" deep wall cabinets require additional support. They should be screwed on both sides to adjacent cabinets, wall, soffit or ceiling joist.

DOUBLE DOOR (20 1/2" HIGH)

W3021
W3621

See Price Book
page 6.

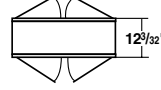


- Two doors
- No shelf

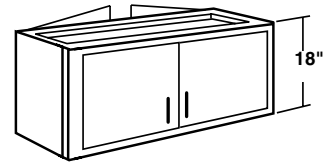
PENINSULA WALL BUTT DOORS (18" HIGH)

PW3018B

See Price Book
page 7.



Top View

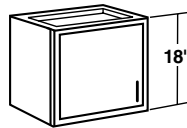


- 12-3/32" deep (excluding doors)
- Four doors, two butt doors on each side
- No center mullion
- No shelf
- Not available in special depths

SINGLE DOOR (18" HIGH)

W2418

See Price Book
page 6.



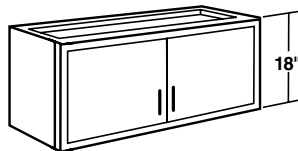
- One door
- No shelf

WARNING Peninsula Wall Cabinets require support every 16" of cabinet width on both faces of the cabinet. Use #10 or larger truss/pan head screws. Screws should penetrate 1-1/2" minimum into solid wood (ceiling joist or soffit frame)

BUTT DOORS (18" HIGH)

W3018B

See Price Book
page 6.

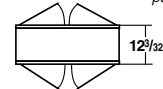


- Butt doors
- No center mullion
- No shelf

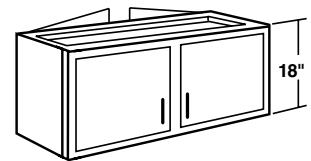
PENINSULA WALL DOUBLE DOOR (18" HIGH)

PW3618

See Price Book
page 7.



Top View

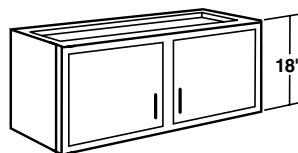


- 12-3/32" deep (excluding doors)
- Four doors, two doors on each side
- No shelf
- Not available in special depths

DOUBLE DOOR (18" HIGH)

W3318
W3618
W3918
W4218

See Price Book
page 6.



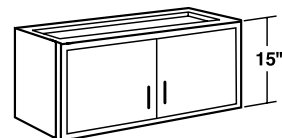
- Two doors
- No shelf

WARNING Peninsula Wall Cabinets require support every 16" of cabinet width on both faces of the cabinet. Use #10 or larger truss/pan head screws. Screws should penetrate 1-1/2" minimum into solid wood (ceiling joist or soffit frame)

BUTT DOORS (15" HIGH)

W3015B

See Price Book
page 7.



- Butt doors
- No center mullion
- No shelf

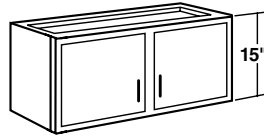
CAUTION INSTALLER: Installation of a wall cabinet by itself is not recommended unless additional support is provided such as attachment to a soffit. See cabinet installation guide for specific instructions.

WALL CABINETS

12" DEEP — All single door wall cabinets are invertible for L or R hinging

**DOUBLE DOOR
(15" HIGH)**

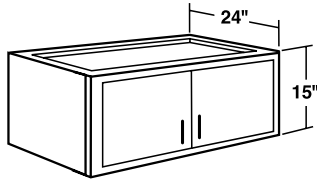
W3315 *See Price Book*
W3615 *page 7.*
W3915



- Two doors
- No shelf

**WALL REFRIGERATOR 24" DEEP BUTT DOORS
(15" HIGH)**

WR3015B *See Price Book*
 page 7.

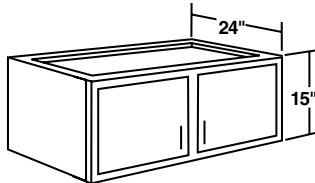


- Butt doors
- No center mullion
- No shelf

CAUTION INSTALLER: 24" deep wall cabinets require additional support. They should be screwed on both sides to adjacent cabinets, wall, soffit or ceiling joist.

**WALL REFRIGERATOR 24" DEEP DOUBLE DOOR
(15" HIGH)**

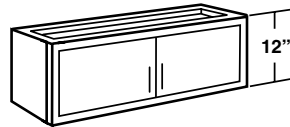
WR3315 *See Price Book*
WR3615 *page 7.*
WR3915



- Two doors
- No shelf

**BUTT DOORS
(12" HIGH)**

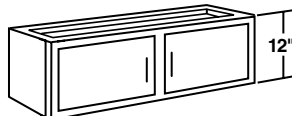
W3012B *See Price Book*
 page 7.



- Butt doors
- No center mullion
- No shelf

**DOUBLE DOOR
(12" HIGH)**

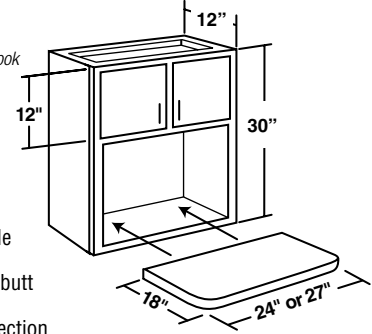
W3612 *See Price Book*
W3912 *page 7.*



- Two doors
- No shelf

**WALL MICROWAVE SHELF CABINET BUTT DOORS
AND DOUBLE DOOR
(30" HIGH)**

WMSC2730B *See Price Book*
WMSC3030 *page 7.*

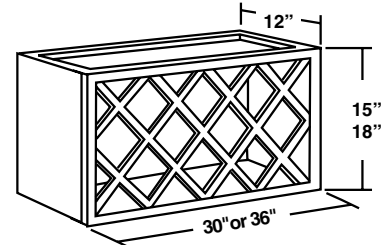


- Designed for "countertop" style microwave ovens
- Two doors, WMSC2730B has butt doors, no center mullion
- No adjustable shelf in upper section
- Interior color matches exterior color
- Matching 3/4" thick veneer microwave shelf extends 6-25/32" beyond face frame. Shipped unattached for easier cabinet installation. Shelf mounting hardware included.
- Not available in special depths
- Oven opening dimensions
WMSC2730B - 24" wide x 18" deep (shelf) x 15-3/4" high
WMSC3030 - 27" wide x 18" deep (shelf) x 15-3/4" high

CAUTION INSTALLER: WMSC cabinets require additional support. They should be screwed on both sides to adjacent cabinets, wall, soffit or ceiling joist.

**WALL LATTICE
(15" HIGH or 18" HIGH)**

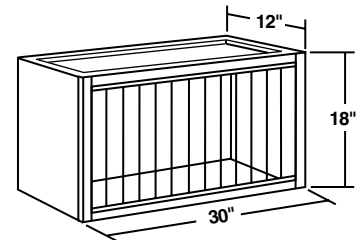
WL3615 *See Price Book*
WL3018 *page 7.*



- Interior color matches exterior
- WL3615 holds 13 bottles and WL3018 holds 11 bottles
- Lattice is not removable
- 4" x 4" bottle openings
- Cannot be used as end cabinet in vertical position
- Not available in special depths

**WALL CHINA DISPLAY
(18" HIGH)**

WCD3018 *See Price Book*
 page 7.



- Interior color matches exterior
- Holds 13 plates
- Each plate opening is 1-5/8" wide, 14-1/2" high, 11-1/4" deep
- Plate racks are not removable
- Not available in special depths

Shelves and interior match exterior.

12" DEEP

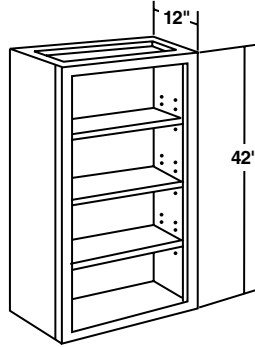
BOOKCASES

BOOKCASES

**BOOKCASE†
(42" HIGH)**

- BK1542
- BK1842
- BK2142
- BK2442
- BK3042

See Price Book
page 8.

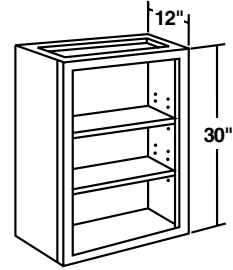


- Three adjustable 3/4" thick shelves
- Shelves and interior match exterior
- Plastic shelf supports used during shipping
- Low profile clear plastic shelf supports are provided
- Available in special depths, see page 35

**BOOKCASE†
(30" HIGH)**

- BK1530
- BK1830
- BK2130
- BK2430
- BK3030

See Price Book
page 8.

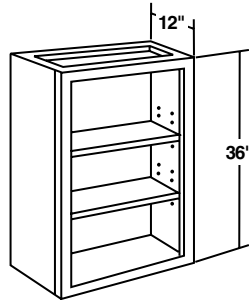


- Two adjustable 3/4" thick shelves
- Shelves and interior match exterior of ends
- Plastic shelf supports used during shipping
- Low profile clear plastic shelf supports are provided
- Available in special depths, see page 35

**BOOKCASE†
(36" HIGH)**

- BK1536
- BK1836
- BK2136
- BK2436
- BK3036

See Price Book
page 8.

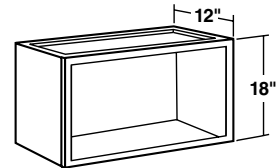


- Two adjustable 3/4" thick shelves
- Shelves and interior match exterior of ends
- Plastic shelf supports used during shipping
- Low profile clear plastic shelf supports are provided
- Available in special depths, see page 35

**BOOKCASE†
(18" HIGH)**

- BK3018

See Price Book
page 8.



- Interior matches the exterior
- No shelf
- Available in special depths, see page 35

†BOOKCASE (BK) WARNING: Bookcase cabinets are typically subjected to extreme weight. Installation of a cabinet by itself is not recommended unless additional support such as attachment to a soffit or supported by a countertop. See cabinet installation guide for specific instructions. Special depth Bookcase cabinets greater than 12" deep should not be used in wall hung applications. Wall hung applications must be limited to 15 lbs. per square foot of shelf area, not to exceed 50 lbs. per shelf. FAILURE TO FOLLOW THESE LIMITATIONS COULD CAUSE SERIOUS INJURY AND WILL VOID THE PRODUCT WARRANTY.



BASE CABINETS

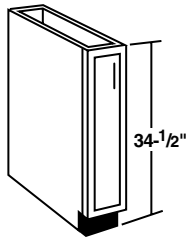
24" DEEP

Specify left or right hinging on single door cabinets.

SINGLE DOOR FULL-HEIGHT

B9 FH L or R

See Price Book page 9.

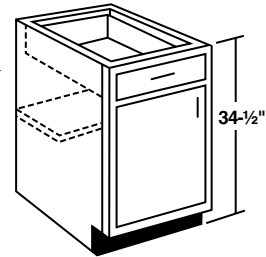


- One full-height door
- Specify L or R hinging
- No shelf

SINGLE DOOR

B12 HDS L or R
B15 HDS L or R
B18 HDS L or R
B21 HDS L or R
B24 HDS L or R

See Price Book page 9.

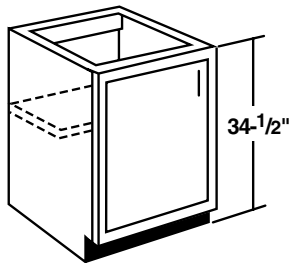


- One door
- One drawer
- One adjustable half-depth shelf
- Specify L or R hinging

SINGLE DOOR FULL-HEIGHT

B12 FH HDS L or R
B15 FH HDS L or R
B18 FH HDS L or R
B21 FH HDS L or R
B24 FH HDS L or R

See Price Book page 9.

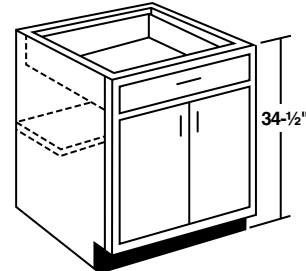


- One full-height door
- One adjustable half-depth shelf
- Specify L or R hinging

BUTT DOORS

B24B HDS
B27B HDS
B30B HDS

See Price Book page 9.

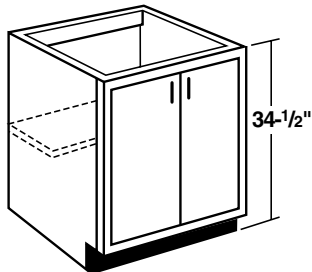


- Butt doors
- No center mullion
- One drawer
- One adjustable half-depth shelf

DOUBLE DOOR FULL-HEIGHT — BUTT DOOR

B27B FH HDS
B30B FH HDS

See Price Book page 9.

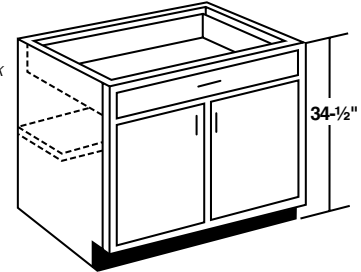


- Two full-height butt doors
- No center mullion
- One adjustable half-depth shelf

DOUBLE DOOR

B33 HDS
B36 HDS
B39 HDS

See Price Book page 9.

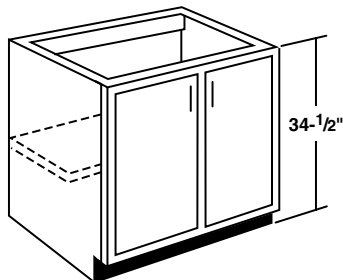


- Two doors
- One drawer
- One adjustable half-depth shelf

DOUBLE DOOR FULL-HEIGHT

B33 FH HDS
B36 FH HDS
B39 FH HDS
B42 FH HDS
B48 FH HDS

See Price Book page 9.

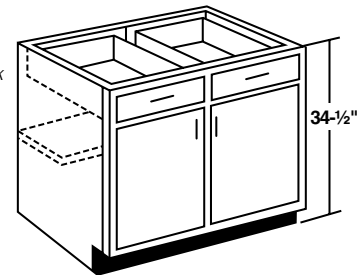


- Two full-height doors
- One adjustable half-depth shelf

DOUBLE DOOR

B42 HDS
B45 HDS
B48 HDS

See Price Book page 9.



- Two doors
- Two drawers
- One adjustable half-depth shelf

BASE CABINETS

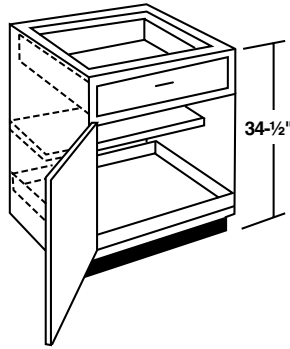
Specify left or right hinging on single door cabinets. 24" DEEP

BASE CABINETS

SINGLE DOOR — ONE STANDARD TRAY

- B12 H1T L or R
- B15 H1T L or R
- B18 H1T L or R
- B21 H1T L or R
- B24 H1T L or R

See Price Book page 10.

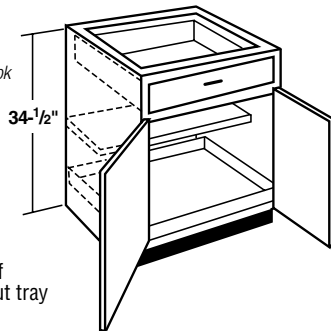


- One door
- One drawer
- One adjustable half-depth shelf
- One standard pull-out tray
- Not available in special depths
- Specify L or R hinging

BUTT DOORS — ONE STANDARD TRAY

- B24B H1F
- B27B H1F
- B30B H1F

See Price Book page 10.

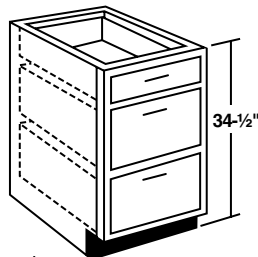


- Butt doors
- No center mullion
- One drawer
- One adjustable half-depth shelf
- One standard full-width pull-out tray
- Not available in special depths

BASE DRAWER — THREE DRAWER

- BD12-3D
- BD15-3D
- BD18-3D
- BD21-3D
- BD24-3D
- BD30-3D*
- BD36-3D*

See Price Book page 10.

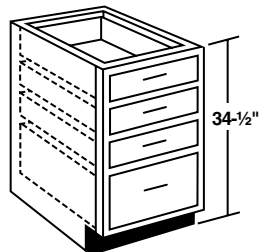


- Three drawers; one standard and two deep
- * Full extension drawer guides on two bottom deep drawers. Standard side-mount 3/4 extension epoxy guides will be used on 18" deep option.

BASE DRAWER — FOUR DRAWER

- BD12-4D
- BD15-4D
- BD18-4D
- BD21-4D
- BD24-4D

See Price Book page 10.

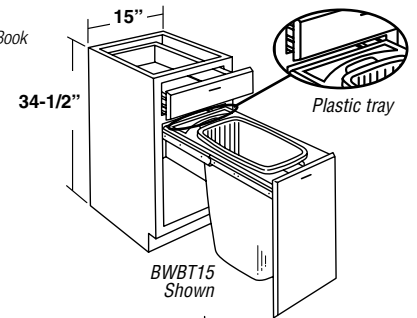


- Four drawers; three standard and one deep

BASE WASTEBASKET TOPMOUNT

- BWBT15
- BWBT18

See Price Book page 10.



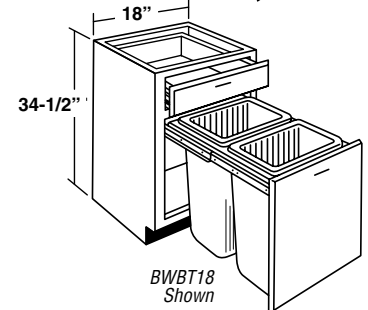
- One top drawer
- Top mounted veneered hardwood wastebasket tray assembly with full-extension ball-bearing guides
- Door is attached to tray assembly
- 35 qt. white plastic basket is 10-1/2" x 14-5/8" x 18" high

BWBT15

- One removable 35 qt. white plastic basket
- One 5-1/2" deep white plastic tray for garbage bag storage

BWBT18

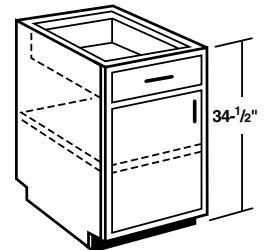
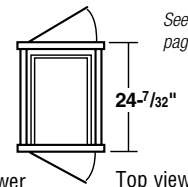
- Two removable 35 qt. white plastic baskets (no garbage bag tray storage)



PENINSULA BASE SINGLE DOOR

- PB15
- PB18
- PB21
- PB24

See Price Book page 10.



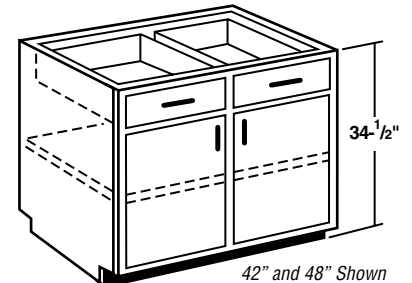
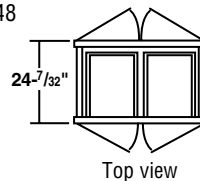
- One top drawer
- One false front
- Door hinged L on drawer side, hinged R on side with false front
- One adjustable full-depth shelf
- 24-7/32" deep (excluding doors/drawer fronts)
- Not available in special depths

NOTE: it is **not** recommended to use a single PB (Peninsula Base) cabinet in a "stand alone" island configuration. A minimum of two cabinets joined together should be employed. See cabinet installation guide for specific instructions. Failure to follow this limitation could cause serious injury and will void the product warranty.

PENINSULA BASE DOUBLE DOOR

- PB30B
- PB36
- PB42
- PB48

See Price Book page 10.



- PB30B and PB36 cabinets have one top drawer on kitchen side and false front on dining room side
- PB42 and PB48 cabinets have two top drawers on kitchen side and two false fronts on dining room side
- Each side has two doors
- PB30B has butt doors both sides, no center mullion
- One adjustable full-width full-depth shelf
- 24-7/32" deep (excluding doors/drawer fronts)
- Not available in special depths

NOTE: it is **not** recommended to use a single PB (Peninsula Base) cabinet in a "stand alone" island configuration. A minimum of two cabinets joined together should be employed. See cabinet installation guide for specific instructions. Failure to follow this limitation could cause serious injury and will void the product warranty.

BASE CABINETS



Merillat.

Make perfect sense.

Basics™

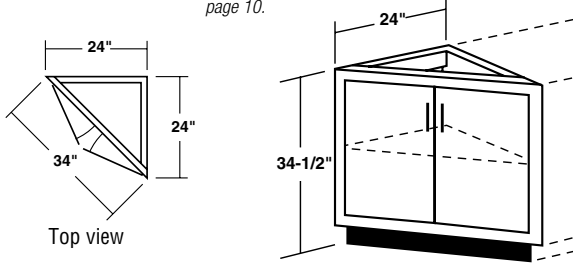
BASE CABINETS

24" DEEP

BASE CORNER ANGLE BUTT DOORS

BCA24B FH

See Price Book page 10.

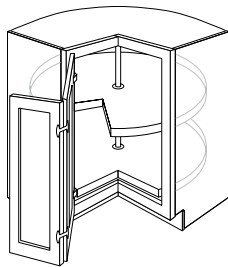


- For use at the L or R end of cabinet run or as a "stand alone" in a corner
- Two full-height butt doors, no center mullion
- One adjustable shelf
- Not available in special depths

BASE CORNER REVOLVING BUILDER

BCRB33 L or R
BCRB36 L or R

See Price Book page 10.



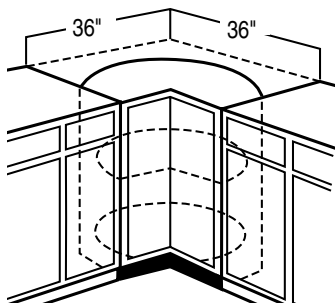
- Specify L or R hinging
- Bi-fold doors with independent adjustment hinged to cabinet face frame
- Features concealed hinges with 168° opening angle
- Two 24" diameter rotating high impact white plastic pie-cut shelves. Shelves rotate independently of bi-fold doors and each other
- Shelf load capacity rating is 15 lbs. per square foot, not to exceed 50 lbs.
- BCRB33 requires 33" x 33" of wall space
- BCRB36 requires 36" x 36" of wall space
- Use BEPF3 if either end is exposed (requires 3" of space). Order separately
- Not available in special depths

CAUTION: If cabinet is installed next to an appliance deeper than 25", it may interfere with cabinet door when opening. Options available: A) Use a filler between cabinet and appliance, B) Pull cabinet even with appliance front (pulling cabinet will result in a deeper countertop and overall base cabinet depth dimension).

BASE LAZY SUSAN

BLS36

See Price Book page 11.

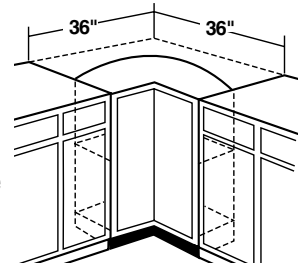


- Two 28" diameter high impact white plastic pie-cut shelves
- Shelves are attached to doors which all rotate as a unit
- Shelf load capacity rating is 15 lbs. per sq. ft., not to exceed 50 lbs.
- Requires 36" x 36" of wall space
- Use BEPF3 if either end is exposed (requires 3" of space). Order separately
- Not available in special depths

BASE CORNER FIXED SHELF

BCFS36 L or R

See Price Book page 11.

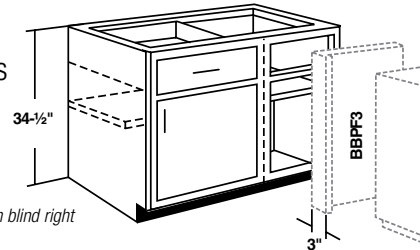


- Specify L or R hinging
- Bi-fold doors with independent adjustment hinged to cabinet face frame
- Features concealed hinges with 168° opening angle
- One fixed pie-cut shelf in center position
- Requires 36" x 36" of wall space
- Use BEPF3 if either end is exposed (requires 3" of space). Order separately
- Not available in special depths

CAUTION: If cabinet is installed next to an appliance deeper than 25", it may interfere with cabinet door when opening. Options available: A) Use a filler between cabinet and appliance, B) Pull cabinet even with appliance front (pulling cabinet will result in a deeper countertop and overall base cabinet depth dimension).

BASE BLIND CORNER

BBC 36/39 FH BL or BR HDS
BBC 39/42 BL or BR HDS
BBC 42/45 BL or BR HDS
BBC 45/48 BL or BR HDS
BBC 48/51 BL or BR HDS



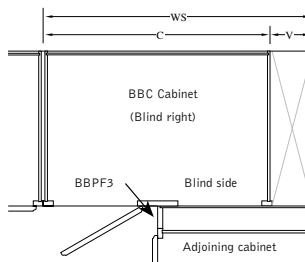
See Price Book page 11. Shown blind right

- Specify blind left (BL) or blind right (BR)
- One drawer; except BBC 36/39 FH which does not have a drawer
- One door. BBC 36/39 FH has a full-height door
- Door is hinged from face frame center stile
- One full-width half-depth adjustable shelf
- Order blind panel with 3" filler BBPF3 separately
- Door and drawer hardware clearance:
No Pull = 1-5/8" 2-7/8" Pull = 4-1/2"

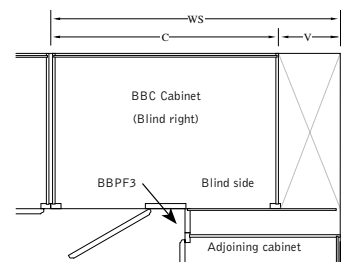
INSTALLATION EXAMPLE BASE BLIND CORNER CABINET

Base Blind Corner cabinets provide access to corner space and permit adjustability of up to 2-7/8" to aid in kitchen layout. The blind side corner (area of cabinet hidden by end of adjoining cabinet) must be ordered Blind Left (BL) or Blind Right (BR). "Pulling" the cabinet away from the corner (adding up to an additional 2-7/8" to the void area), and using the separately ordered BBPF3 panel/filler provides clearance for opening doors and drawers when decorative hardware (pulls/knobs) is used.

Base Blind Corner	(WS) Wall Space		(C) Actual Cabinet Width	(V) Void Area		Door Opening
	No Pull	2-7/8" Pull		No Pull	2-7/8"	
BBC 36/39 FH	36"	38-7/8"	24"	12"	14-7/8"	7-1/2"
BBC 39/42	39"	41-7/8"	30"	9"	11-7/8"	10-1/2"
BBC 42/45	42"	44-7/8"	36"	6"	8-7/8"	13-1/2"
BBC 45/48	45"	47-7/8"	42"	3"	5-7/8"	16-1/2"
BBC 48/51	48"	50-7/8"	48"	0"	2-7/8"	19-1/2"



Base Blind Corner — No pull



Base Blind Corner — 2 7/8" pull
Cabinet not to be pulled more than 2 7/8" from corner.

BASE CABINETS

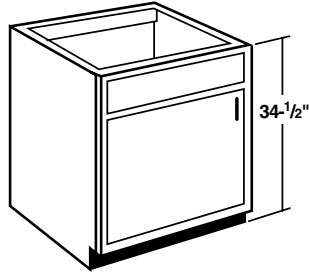
Specify left or right hinging on single door cabinets. 24" DEEP

BASE CABINETS

SINK BASE SINGLE DOOR

SB12 L or R
SB15 L or R
SB18 L or R
SB21 L or R
SB24 L or R

See Price Book page 11.

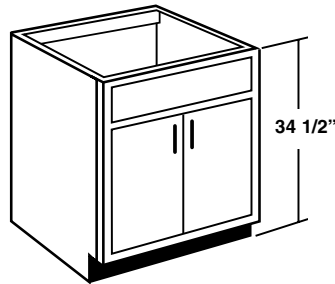


- Specify L or R hinging
- One door
- One false front
- No shelf

SINK BASE — BUTT DOORS

SB27B
SB30B

See Price Book page 11.

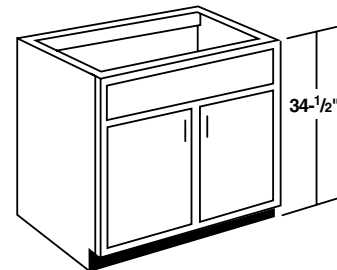


- Butt doors
- No center mullion
- One false front
- No shelf

SINK BASE DOUBLE DOOR

SB33
SB36
SB39

See Price Book page 11.

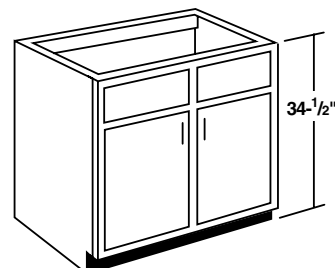


- Two doors
- One false front
- No shelf

SINK BASE DOUBLE DOOR

SB42
SB45
SB48

See Price Book page 11.

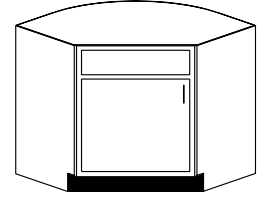
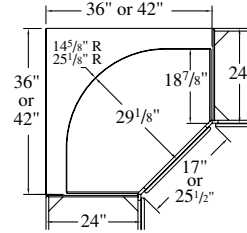


- Two doors
- Two false fronts
- No shelf

SINK BASE ANGLE

SBA36 L or R
SBA42 L or R

See Price Book page 11.



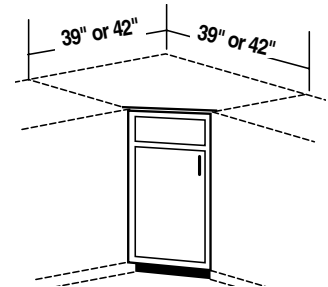
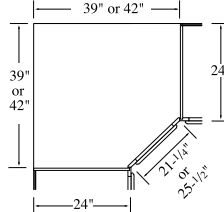
- Specify L or R hinging
- One door
- One false front
- No shelf
- SBA36 requires 36" x 36" of wall space
- SBA42 requires 42" x 42" of wall space
- Top panel must be cut in field to receive sink/plumbing
- 29-1/4" minimum doorway clearance required for delivery with cabinet door and false front removed
- Use BEPF34 if either end is exposed (requires 3" space). Order separately
- Not available in special depths

CAUTION: If cabinet is installed next to an appliance deeper than 25", it may interfere with cabinet door when opening. Options available: A) Use a filler between cabinet and appliance, B) Pull cabinet even with appliance front (pulling cabinet will result in a deeper countertop and overall base cabinet depth dimension).

SINK FRONT ANGLE

SFA39 L or R
SFA42 L or R

See Price Book page 11.

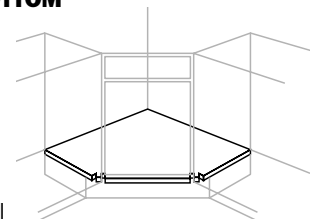


- Specify L or R hinging
- One door
- One false front
- CANNOT BE TRIMMED
- SFA39 requires 39" x 39" of wall space
- SFA42 requires 42" x 42" of wall space
- Toe space (toekick backer) assembly included. Shipped unattached
- SFDB4242 floor bottom panel not included. Order separately

SINK FRONT DIAGONAL BOTTOM

SFDB4242

See Price Book page 11.



- Designed to be used as an optional cabinet bottom with SFA39 and SFA42
- Fits SFA42 without trimming
- Must be field trimmed when used with SFA39
- 42-3/16" x 42-3/16"
- 3/8" thick engineered wood, laminated one side
- Installation screws included
- Specify Natural Maple



Merillat.

Make perfect sense.

Basics™

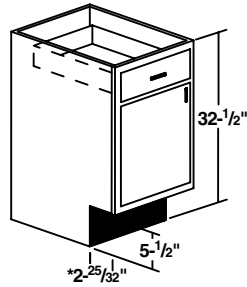
UNIVERSAL CABINETS 32-1/2" HIGH x 24" DEEP

Specify left or right hinging on single door base cabinets

UNIVERSAL BASE SINGLE DOOR

UB12 L or R
UB15 L or R
UB18 L or R
UB21 L or R
UB24 L or R

See Price Book
page 12.

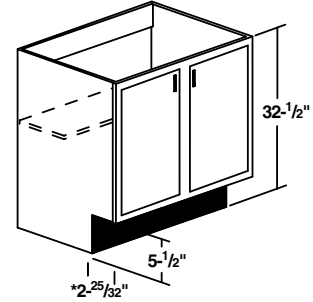


- Specify L or R hinging
- One door
- One drawer
- No shelf

UNIVERSAL BASE DOUBLE DOOR FULL-HEIGHT

UB33 FH HDS
UB36 FH HDS

See Price Book
page 12.

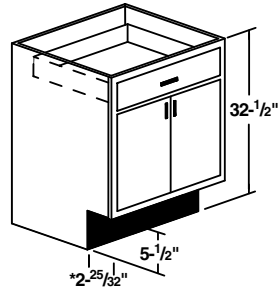


- Two full-height doors
- Adjustable half-depth shelf

UNIVERSAL BASE BUTT DOORS

UB27B
UB30B

See Price Book
page 12.

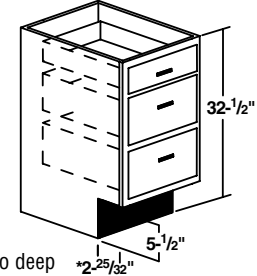


- Butt doors
- No center mullion
- One drawer
- No shelf

UNIVERSAL BASE DRAWER — THREE DRAWER

UBD12-3D
UBD15-3D
UBD18-3D
UBD21-3D
UBD24-3D

See Price Book
page 12.

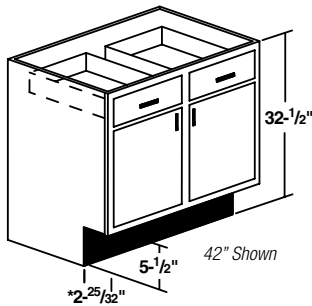


- Three drawers; one standard and two deep

UNIVERSAL BASE DOUBLE DOOR

UB36
UB42

See Price Book
page 12.

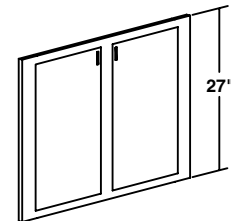


- Two doors
- UB36 has one drawer, UB42 has two drawers
- No shelf

UNIVERSAL BASE SINK FRONT DOUBLE DOOR FULL-HEIGHT

UBSF36 FH

See Price Book
page 12.

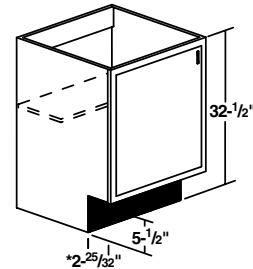


- Two full-height doors
- Toekick Not included
- Not trimmable

UNIVERSAL BASE SINGLE DOOR FULL-HEIGHT

UB24 FH HDS L or R

See Price Book
page 12.

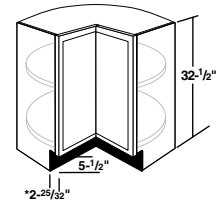


- Specify L or R hinging
- One full-height door
- One adjustable half-depth shelf

UNIVERSAL BASE LAZY SUSAN

UBLS36

See Price Book page 12.

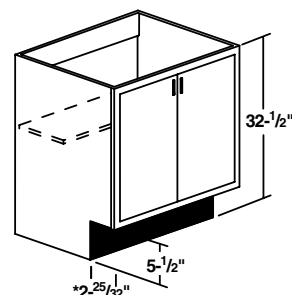


- Two 28" diameter high impact white plastic pie-cut shelves
- Shelves are attached to doors which all rotate as a unit
- Shelf load capacity rating is 15 lbs. per sq. ft., not to exceed 50 lbs.
- Requires 36" x 36" of wall space
- Use BEPF3 if either end is exposed (requires 3" of space). Must be field trimmed to 32-1/2" high. Order separately
- Not available in special depths

UNIVERSAL BASE FULL-HEIGHT — BUTT DOORS

UB30B FH HDS

See Price Book
page 12.

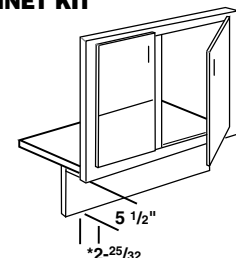


- Two full-height butt doors
- No center mullion
- One adjustable half-depth shelf

UNIVERSAL SINK FRONT CABINET KIT

USFCK30 FH
USFCK33 FH
USFCK36 FH
USFCK42 FH

See Price Book
page 12.



- Two full-height doors
- Face frame with center mullion
- Includes toe space (toekick backer) assembly, shipped unattached
- Includes bottom panel made of 3/8" thick engineered wood laminate one side. Shipped separately

UNIVERSAL CABINETS

TALL CABINETS

18" Deep VLC cabinets are available. To order add 18 to the end of the size code. Example: VLC368418B

UTILITY AND VANITY LINEN CABINETS 12", 21" & 24" DEEP - 84", 90", & 96" TALL

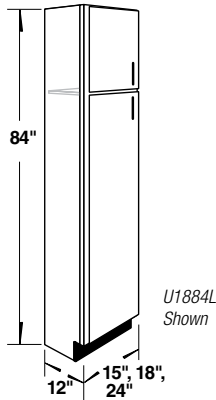
Utility — 12" Deep

U1584 L or R
U1884 L or R
U2484 L or R
U3684B

See Price Book
page 13.

U1590 L or R
U1890 L or R
U2490 L or R
U3690B

U1596 L or R
U1896 L or R
U2496 L or R
U3696B

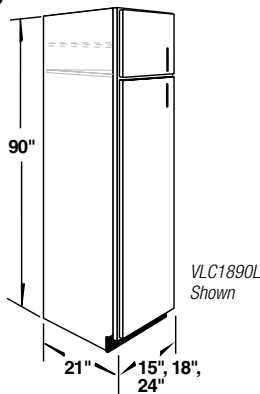


Vanity Linen Cabinet — 21" Deep

VLC1584 L or R
VLC1884 L or R
VLC2484 L or R
VLC3684B

VLC1590 L or R
VLC1890 L or R
VLC2490 L or R
VLC3690B

VLC1596 L or R
VLC1896 L or R
VLC2496 L or R
VLC3696B

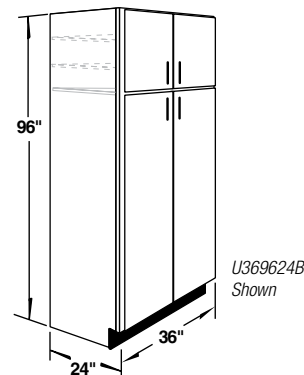


Utility — 24" Deep

U158424 L or R
U188424 L or R
U248424 L or R
U368424B

U159024 L or R
U189024 L or R
U249024 L or R
U369024B

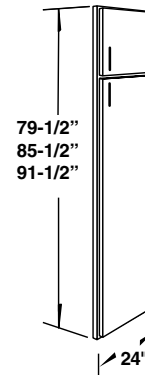
U159624 L or R
U189624 L or R
U249624 L or R
U369624B



- 15", 18" and 24" wide cabinets have one door on both upper and bottom sections. Specify L or R hinging
- 36" wide cabinets have two butt doors on both upper and bottom sections. 3" wide frame center mullion in upper section only
- Fixed shelf between upper and bottom sections
- 96" tall cabinets have two adjustable shelves in upper section
- 90" tall cabinets have one adjustable shelf in upper section
- 84" tall cabinets have no shelves in upper section
- Bottom section pre-drilled in end panels for adjustable shelves and/or tray kits. Order separately
- See USK for available shelf kits for Utility cabinets
- See VLSK for available shelf kits for Vanity Linen cabinets
- See ROT and BTK for available tray kits for 24" deep Utility cabinets
- See VTK for available tray kits for 21" deep Vanity Linen cabinets
- 96" tall cabinets include toe kick platform, shipped unattached for easier handling and installation. Toe kick cover required on exposed sides of platform

UTILITY FRONT

UF2484 L or R
UF2490 L or R
UF2496 L or R



See Price Book
page 14.

- Specify L or R hinging
- One door on both upper and bottom sections
- Actual height of UF2484 is 79-1/2"
- Actual Height of UF2490 is 85-1/2"
- Actual height of UF2496 is 91-1/2"
- Face frame is not extended for toe kick

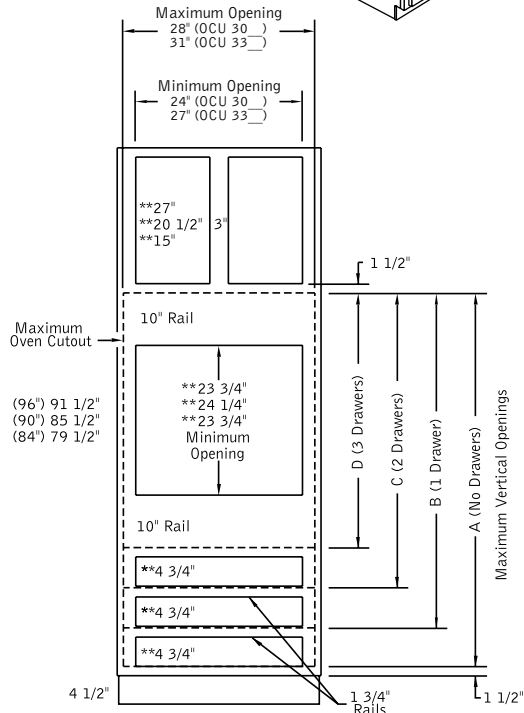
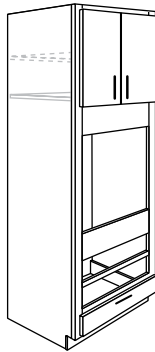


TALL CABINETS

OVEN CABINET UNIVERSAL — 24" DEEP (84", 90", & 96" HIGH)

- OCU3084B
- OCU3384
- OCU3090B
- OCU3390
- OCU3096B
- OCU3396

See Price Book page 14.



**Vertical face frame opening size

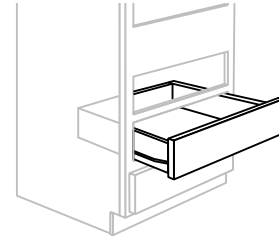
Maximum Vertical Openings for Oven

Cabinet Height	A	B	C	D
84"	60"	53 3/4"	47 1/4"	40 3/4"
90"	60 1/2"	54 1/4"	47 3/4"	41 1/4"
96"	60"	53 3/4"	47 1/4"	40 3/4"

- Two doors on upper section
- 30" wide cabinets have butt doors, no center mullion
- Face-mounted door hinges are used for proper face frame reveal
- Three full-width standard height drawer openings at cabinet bottom
- **Includes one full-width standard height drawer**
- **Order additional drawer(s) as required.** See ODK (Oven Drawer Kit)
- 96" tall cabinets have two adjustable shelves in upper section
- 90" tall cabinets have one adjustable shelf in upper section
- 84" tall cabinets have no shelf in upper section
- Fixed shelf between upper and oven center section
- Center section accommodates both single and double ovens by trimming/ removing horizontal cross rails from face frame.
- 3" wide trimmable vertical face frame styles
- Oven support platform **NOT** included. Order OCSP separately
- 96" tall cabinets include a toekick platform shipped unattached for easier handling and installation. Toekick cover required on exposed sides of platform
- Not available in special depths

OVEN DRAWER KIT

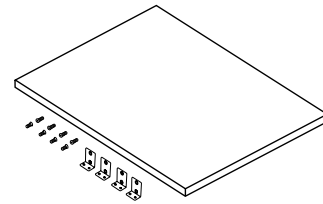
- ODK30 See Price Book page 14.
- ODK33



- Optional drawer for use with Oven Cabinet Universal (OCU) cabinet
- Field installed
- Available in all door styles. Specify product line for correct drawer front
- Provides additional storage when a single or compact double oven is used
- A maximum of two additional drawers can be added to OCU
- Kit includes drawer front, drawer core, guides and mounting hardware
- Order decorative hardware separately when required
- One drawer per kit

OVEN CABINET SUPPORT PLATFORM

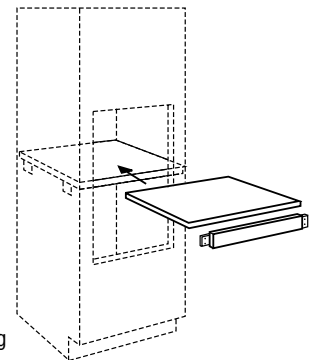
- OCSP30 See Price Book page 14.
- OCSP33



- Supports oven unit in OCU cabinets
- Field installed
- 1-1/8" thick engineered wood unfinished on all surfaces
- Includes four heavy-duty metal mounting brackets and eight screws which install into pre-drilled cabinet end panel holes for proper height adjustment

DOUBLE OVEN CABINET KIT

- DOCK30 See Price Book page 14.
- DOCK33



- Designed to provide additional support for a combination microwave oven and built-in oven installation
- Includes one OCSP to support the microwave oven. This includes an engineered wood platform and mounting hardware which install into pre-drilled cabinet end panel holes
- Includes a field installed 3" wide face frame rail to divide the two openings. Installation cleat attached
- Divider rail sizes: DOCK30 - 3/4" x 3" x 24" long
DOCK33 - 3/4" x 3" x 27" long
- Specify wood species and finish for divider rail
- Requires a second OCSP platform to support the built-in oven for a combination design. Order the second OCSP platform separately

CAUTION: Self cleaning appliances generate intense heat during a cleaning cycle. The effectiveness of the appliance seal or gasket may vary due to aging or improper installation.

TALL CABINETS



Merillat.

Make perfect sense.

Basics™

—21" DEEP— Specify Left or Right hinging where noted.

VANITY CABINETS 31-1/2" AND 34-1/2" HIGH

No center shelf

18" deep vanities are available. To order 18" deep vanities add 18 to the end of the size code. Example: VB603518B FH

VANITY BASE FULL-HEIGHT SINGLE DOOR

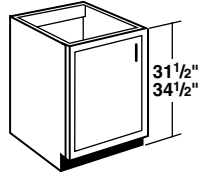
31-1/2" HIGH

- VB15 FH L or R
- VB21 FH L or R
- †VB24S FH L or R

34-1/2" HIGH

- VB1235 FH L or R
- VB1535 FH L or R
- VB1835 FH L or R
- VB2135 FH L or R
- †VB2435S FH L or R

See Price Book page 15.



- One full-height door
- † Accepts DeNova™ Beginnings™ natural granite or marble vanity top. See page 24 for details

VANITY BASE FULL-HEIGHT — BUTT DOORS

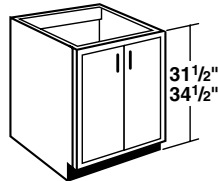
31-1/2" HIGH

- VB27B FH
- †VB30B FH

34-1/2" HIGH

- VB2735B FH
- †VB3035B FH

See Price Book page 15.



- Two full-height butt doors
- No center mullion
- † Accepts DeNova™ Beginnings™ natural granite or marble vanity top. See page 24 for details

VANITY BASE FULL-HEIGHT DOUBLE DOOR

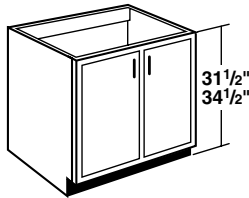
31-1/2" HIGH

- VB33 FH
- †VB36 FH
- VB42 FH

34-1/2" HIGH

- VB3335 FH
- †VB3635 FH
- VB4235 FH

See Price Book page 16.



- Two full-height doors
- † Accepts DeNova™ Beginnings™ natural granite or marble vanity top. See page 24 for details

VANITY BASE FULL-HEIGHT THREE DOOR

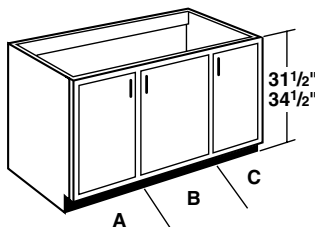
31-1/2" HIGH

- †VB48 FH
- VB54 FH

34-1/2" HIGH

- †VB4835 FH
- VB5435 FH

See Price Book page 16.



- Three full-height doors
- Center door is always hinged R-hand
- † Accepts DeNova™ Beginnings™ natural granite or marble vanity top. See page 24 for details

Cabinet face dimensions :

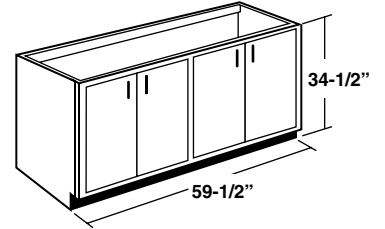
	A	B	C
48"	15"	18"	15"
54"	18"	18"	18"

VANITY BASE FULL-HEIGHT FOUR DOOR — BUTT DOORS

34-1/2" HIGH

- †VB6035B FH

See Price Book page 16.



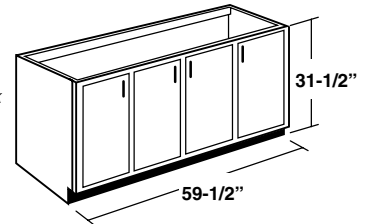
- Two pairs of full-height butt doors
- Actual cabinet width is 59-1/2"
- Equal size doors
- One center mullion
- Not available in 31-1/2" high
- Frame stiles extended so cabinet is trimmable by 1/2" each side
- † Accepts DeNova™ Beginnings™ natural granite or marble vanity top. See page 24 for details

VANITY BASE FULL-HEIGHT FOUR DOOR

31-1/2" HIGH

- †VB60 FH

See Price Book page 16.



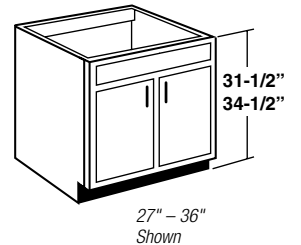
- Actual cabinet width is 59-1/2"
- Outer doors are 13-1/4" wide
- Inner doors are 12-5/8" wide
- Three center mullions
- Not available 34-1/2" high
- Frame stiles extended so cabinet is trimmable by 1/2" each side
- † Accepts DeNova™ Beginnings™ natural granite or marble vanity top. See page 24 for details

VANITY SINK BASE ONE AND TWO DOOR

31-1/2" HIGH 34-1/2" HIGH

- †VSB24 L or R
- VSB27B
- †VSB30B
- VSB33
- †VSB36
- VSB42
- †VSB2435 L or R
- VSB2735B
- †VSB3035B
- VSB3335
- †VSB3635

See Price Book page 17.



- Two doors, except VSB24 and VSB2435 which have a single door (specify L or R hinging)
- VSB27B, VSB2735B, VSB30B and VSB3035B cabinets have butt doors, no center mullion
- One false front, except VSB42 which has two
- 42" wide cabinet not available 34-1/2" high
- † Accepts DeNova™ Beginnings™ natural granite or marble vanity top. See page 24 for details

VANITY CABINETS



Merillat.

Make perfect sense.

Basics™

VANITY CABINETS 31-1/2" AND 34-1/2" HIGH

21" DEEP — Specify Left or Right hinging where noted.

No center shelf

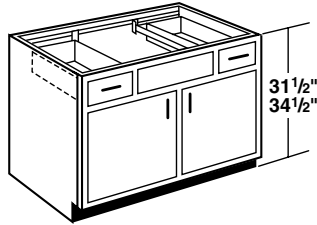
18" deep vanities are available. To order 18" deep vanities add 18 to the end of the size code. Example: VB603518B FH

VANITY SINK BASE TWO DOOR — 2 DRAWER

31-1/2" HIGH 34-1/2" HIGH

†VSB36-2D †VSB3635-2D
VSB39-2D VSB3935-2D

See Price Book page 17.



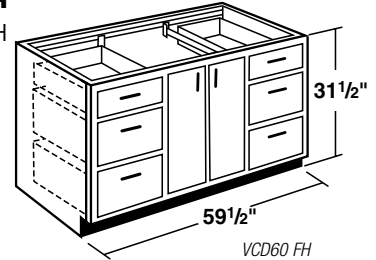
- Two doors
- Two drawers
- One false front between drawers
- 18" space between drawers for sink installation
- Drawer core is offset to allow for larger sinks
- † Accepts DeNova™ Beginnings™ natural granite or marble vanity top. See page 24 for details

VANITY COMBINATION DOUBLE DOOR — 6 DRAWER OR 8 DRAWER

31-1/2" HIGH 34-1/2" HIGH

†VCD60 FH †VCD6035B FH

See Price Book page 19.



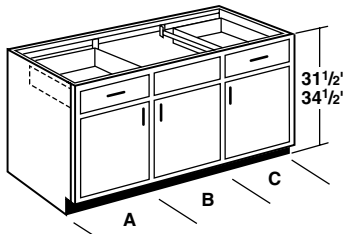
- Actual cabinet width is 59-1/2"
- Two full-height center doors
- VCD6035B FH has butt doors, no center mullion
- VCD60 FH has six drawers; two deep bottom drawers on each side
- VCD6035B FH has eight drawers; one deep bottom drawer each side
- 31-3/4" space between drawers for sink installation
- † Accepts DeNova™ Beginnings™ natural granite or marble vanity top. See page 24 for details

VANITY SINK BASE THREE DOOR — 2 DRAWER

31-1/2" HIGH 34-1/2" HIGH

VSB42-2D VSB4235-2D
† VSB48-2D † VSB4835-2D
VSB54-2D VSB5435-2D

See Price Book page 18.



- Three doors. Center door is always hinged R-hand
- Two drawers
- One false front between drawers
- 21" space between drawers for sink installation
- 54" wide cabinets have a full-width support cross rail along top/front
- † Accepts DeNova™ Beginnings™ natural granite or marble vanity top. See page 24 for details

Cabinet face dimensions

	A	B	C
42"	12"	18"	12"
48"	15"	18"	15"
54"	18"	18"	18"

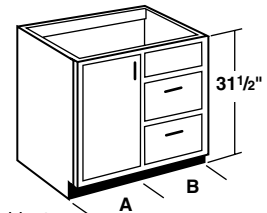
VANITY COMBINATION DRAWER SINGLE DOOR — 2 DRAWER OR 3 DRAWER

31-1/2" HIGH 34-1/2" HIGH

†VCD30 FH DL or DR †VCD3035 FH DL or DR
VCD33 FH DL or DR VCD3335 FH DL or DR
†VCD36 FH DL or DR †VCD3635 FH DL or DR
VCD42 FH DL or DR VCD4235 FH DL or DR

See Price Book page 19.

31-1/2" Shown
Drawers Right (DR)



- Specify left (DL) or right (DR) side for drawers
- One full-height door hinged at side of cabinet
- One false front above drawers
- 31-1/2" high cabinets have two deep drawers
- 34-1/2" high cabinets have three drawers; one deep drawer at bottom position
- † Accepts DeNova™ Beginnings™ natural granite or marble vanity top. See page 24 for details

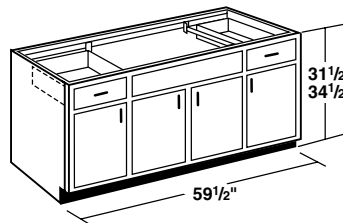
	A	B
30"	15"	15"
33"	16 1/2"	16 1/2"
36"	18"	18"
42"	21"	21"

VANITY SINK BASE FOUR DOOR — 2 DRAWER

31-1/2" HIGH 34-1/2" HIGH

†VSB60-2D †VSB6035B-2D

See Price Book page 18.



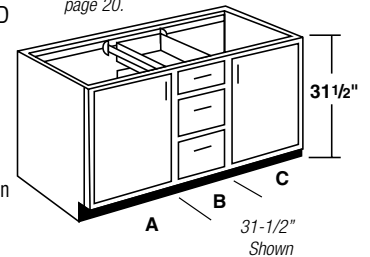
- Actual cabinet width is 59-1/2"
- Two drawers
- One false front between drawers
- Four doors, left doors hinged L-hand and right doors hinged R-hand
- Outer doors are 13-1/4" wide
- VSB60-2D inner doors are 12-5/8" wide
- VSB6035B-2D has butt inner doors, no center mullion, 13-7/16" wide
- Frame stiles extended so cabinet is trimmable by 1/2" each side
- 31-3/4" space between drawers for sink installation
- † Accepts DeNova™ Beginnings™ natural granite or marble vanity top. VT6122 DB OG4 requires converting drawers to false fronts. See page 24 for details

VANITY SINK BASE DOUBLE BOWL — 3 DRAWER OR 4 DRAWER

31-1/2" HIGH 34-1/2" HIGH

VSB54 FH-3D VSB5435 FH-4D
†VSB60 FH-3D †VSB6035 FH-4D

See Price Book page 20.



Cabinet face dimensions:

	A	B	C
54"	21"	12"	21"
59-1/2"	20-3/4"	18"	20-3/4"

Opening on each end for sink installation

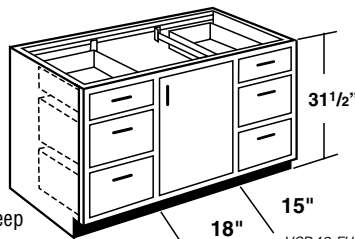
54" = 18-7/8"
59-1/2" = 21-1/4"

VANITY COMBINATION SINGLE DOOR — 6 DRAWER OR 8 DRAWER

31-1/2" HIGH 34-1/2" HIGH

†VCD48 FH †VCD4835 FH

See Price Book page 18.



- One full-height door, always hinged R-hand
- VCD48 FH has six drawers; two deep bottom drawers on each side
- VCD4835 FH has eight drawers; one deep bottom drawer each side
- 21" space between drawers for sink installation
- † Accepts DeNova™ Beginnings™ natural granite or marble vanity top. See page 24 for details

- Actual width of VSB60 cabinets is 59-1/2". Frame stiles are extended so cabinet can be trimmed up to 1/2" each side
- Two full-height doors hinged at side of cabinet
- 31-1/2" high cabinets have three drawers; two deep bottom drawers
- 34-1/2" high cabinets have four drawers; one deep bottom drawer
- † Accepts DeNova™ Beginnings™ natural granite or marble vanity top. See page 24 for details



Merillat.

Make perfect sense.

Basics™

21" DEEP — Specify Left or Right hinging where noted.

VANITY CABINETS 31-1/2" AND 34-1/2" HIGH

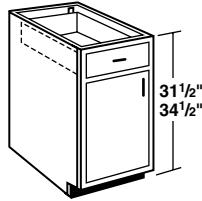
No center shelf

18" deep vanities are available. To order 18" deep vanities add 18 to the end of the size code. Example: VB603518B FH

VANITY BASE SINGLE DOOR

31-1/2" HIGH 34-1/2" HIGH

- VB12 L or R VB1235 L or R
- VB15 L or R VB1535 L or R
- VB18 L or R VB1835 L or R
- VB21 L or R VB2135 L or R
- †VB24 L or R †VB2435 L or R

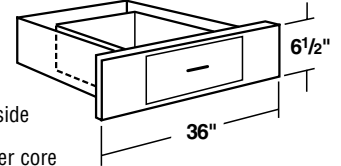


See Price Book page 20.

- Specify L or R hinging
- One door
- One drawer
- † Accepts DeNova™ Beginnings™ natural granite or marble vanity top. Requires conversion of the top drawer to false front in the field. See page 24 for details

DESK KNEE DRAWER DEEP TRIMMABLE — SINGLE DRAWER (6-1/2" HIGH)

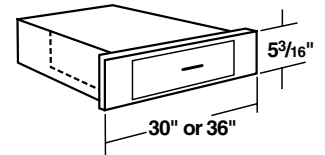
DKDDT36 See Price Book page 21.



- One drawer
- Frame is 3/4" plywood
- Trimmable to 21" wide, 7-1/2" each side
- Requires countertop/writing surface
- Features standard height vanity drawer core
- Available 18" deep

DESK KNEE DRAWER TRIMMABLE — SINGLE DRAWER (5-3/16" HIGH)

DKDT30 DKDT36 See Price Book page 21.

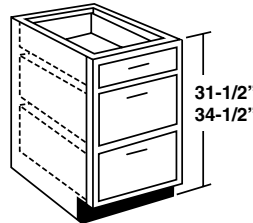


- One 1-5/8" deep pencil drawer
- Unit is designed to be installed between cabinets for sitting
- 4-1/2" face frame stiles, 3/4" thick solid hardwood face frame
- DKDT30 is trimmable to 24" wide, 3" each side
- DKDT36 is trimmable to 30" wide, 3" each side
- Top panel is recessed for easier installation
- Requires countertop/writing surface
- Available 18" deep

VANITY DRAWER — 3 DRAWER

31-1/2" HIGH 34-1/2" HIGH

- VD12-3D VD1235-3D
- VD15-3D VD1535-3D
- VD18-3D VD1835-3D
- VD21-3D VD2135-3D
- VD24-3D VD2435-3D



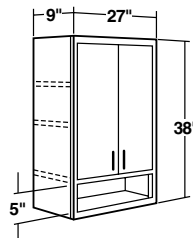
See Price Book page 21.

- Three drawers; one standard and two deep

VANITY WALL CABINETS

VANITY WALL BOUTIQUE (38" HIGH, 9" DEEP)

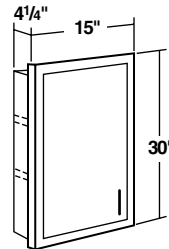
VWB2738B See Price Book page 22.



- Butt doors
- No center mullion
- Two adjustable shelves
- Interior, shelves, and open display area match the cabinet exterior
- 5" high display opening
- Not available in special depths

VANITY WALL RECESSED — SINGLE DOOR (30" HIGH, 4-1/4" DEEP)

VWR1530 See Price Book page 22.

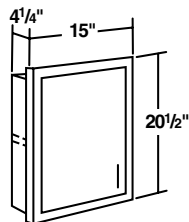


- One door
- Invertible for L or R hinging
- Two adjustable shelves
- Natural Maple interior
- Can be surface or recessed mounted. Designed to fit between wall studs 16" on center
- Not available in special depths

Opening for recessed installation 13-1/2" W x 28-3/4" H x 3-1/2" D

VANITY WALL RECESSED — SINGLE DOOR (20-1/2" HIGH, 4-1/4" DEEP)

VWR1521 See Price Book page 22.



- One door
- Invertible for L or R hinging
- One adjustable shelf
- Natural Maple interior
- Can be surface or recessed mounted. Designed to fit between wall studs 16" on center
- Not available in special depths

Opening for recessed installation 13-1/2" W x 19-1/4" H x 3-1/2" D

VANITY CABINETS



Merillat.

Make perfect sense.

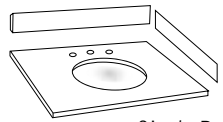
Basics™

VANITY COUNTERTOPS

DENOVA™ BEGINNINGS™ VANITY COUNTERTOPS GRANITE AND MARBLE

Single bowl
25" x 22"
VT2522OG4
VT2522SQ4

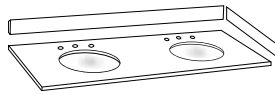
Single bowl
49" x 22"
VT4922OG4
VT4922SQ4



Single Bowl

31" x 22"
VT3122OG4
VT3122SQ4

61" x 22"
VT6122OG4

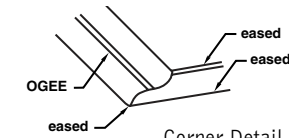


Double Bowl

37" x 22"
VT3722OG4
VT3722SQ4

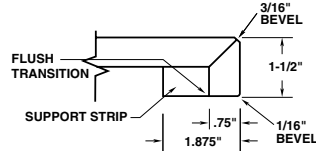
Double bowl
61" x 22"
VT6122DB OG4

Side Splash
VTSS22



Corner Detail
(valid on all except Crema Marfil)

See Price Book
page 22.



Edge Detail
(Crema Marfil Only)

- Available in 7 natural granite colors; Black Galaxy, Blue Pearl, Absolute Black, Golden Hill, Meteorite, Uba Tuba, Wheat and two natural marble colors, White Carrara and Crema Marfil
- Backsplash and one side splash with an eased edge are shipped unattached with the top
- Side splashes can be used universally for left or right hand applications
- Additional side splashes VTSS22 are available as an accessory
- Tops are drilled for 4" spread faucets
- Tops come with a mounted white vitreous china bowl(s) with a water overflow drain integrated in the bowl
- OG style – Classic Ogee front edge profile with eased detail on side edges and eased detail on bowl edge
- OG style tops are 2cm (3/4") thick
- SQ Crema Marfil Only Eased style – Eased front edge profile with eased detail on side edges and bowl edge. Front and side edges are 4cm (1 1/2") thick
- The centerline of the sink bowls on the 61" double bowl top is 15 1/2" from the side edge
- Top, back splash and side splash are factory polished and sealed on exposed surfaces
- 1 year limited warranty

VT2522 tops fit these vanities
VB24S FH, VB2435S FH, VSB24,
VSB2435, *VB24, *VB2435

VT3122 tops fit these vanities
VB30B FH, VB3035B FH, VCD30 FH,
VCD3035 FH, VSB30B, VSB3035B

VT3722 tops fit these vanities
VB36 FH, VB3635 FH, VSB36-2D,
VSB3635-2D, VCD36 FH, VCD3635 FH,
VSB36, VSB3635

VT4922 tops fit these vanities
VB48 FH, VB4835 FH, VSB48-2D,
VSB4835-2D, VCD48 FH,
VCD4835 FH

VT6122 tops fit these vanities
VB60 FH, VB6035B FH, VSB60-2D,
VSB6035B-2D, VCD60 FH,
VCD6035B FH

VT6122 DB tops fit these vanities
VB60 FH, VB6035B FH, *VSB60-2D,
*VSB6035B-2D, VSB60 FH-3D,
VSB6035 FH-4D

*Requires conversion of the top
drawer(s) to false front(s).

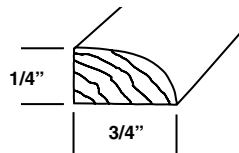
MOLDINGS

WHITE OAK AND BIRCH FINISHES ARE AVAILABLE IN SOLID WOOD AND PRINT MOLDINGS.

SCRIBE MOLDING

SM8
SM8-20
SM8P (Print molding)
SM8P-20 (Print molding)

See Price Book
page 23.

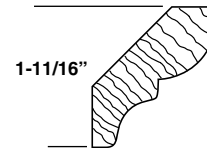


- Available in all options listed above
- Offered in individual 8' lengths or cartons of 20 (160')

CROWN SOFFIT MOLDING

CSM8
CSM8-10

See Price Book
page 23.

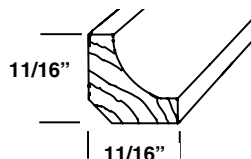


- Available in solid wood White Oak and Birch only.
Not available in Print molding
- Birch also available in glaze finishes
- Offered in individual 8' lengths or cartons of 10 (80')

INSIDE CORNER MOLDING

ICM8
ICM8-10
ICM8P (Print molding)
ICM8P-10 (Print molding)

See Price Book
page 23.

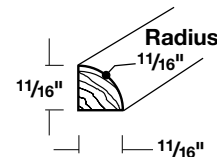


- Available in all options listed above
- Offered in individual 8' lengths or cartons of 10 (80')

QUARTER ROUND MOLDING

QR8
QR8-10

See Price Book
page 23.



- Available in solid wood White Oak and Birch only.
Not available in Print molding
- Offered in individual 8' lengths or cartons of 10 (80')

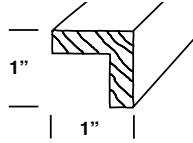


WHITE OAK AND BIRCH FINISHES ARE AVAILABLE IN SOLID WOOD AND PRINT MOLDINGS.

OUTSIDE CORNER MOLDING

- OSC8
- OSC8-10
- OSC8P (Print molding)
- OSC8P-10 (Print molding)

See Price Book page 23.

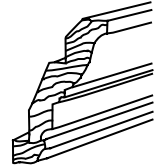


- Available in all options listed above
- Offered in individual 8' lengths or cartons of 10 (80')

CLASSIC CROWN MOLDING

- CCM8
- CCM8-2

See Price Book page 24.

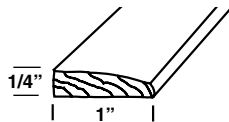


- Available in solid wood White Oak and Birch only. Not available in Print molding
- Birch also available in glaze finishes
- White Oak and Birch offered in individual 8' lengths or cartons of 2 (16')

WIDE SCRIBE MOLDING

- WSM8
- WSM8-10
- WSM8P (Print molding)
- WSM8P-10 (Print molding)

See Price Book page 23.

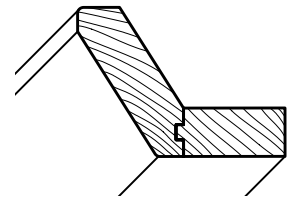


- Available in all options listed above
- Offered in individual 8' lengths or cartons of 10 (80')

ANGLE CROWN MOLDING

- ACM8
- ACM8-6

See Price Book page 24.

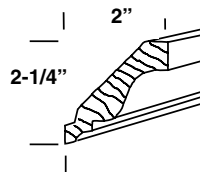


- Available in solid wood Birch only
- Offered in individual 8' lengths or cartons of 6 (48')

CROWN MOLDING

- CM8
- CM8-10
- CM8P (Print molding)
- CM8P-10 (Print molding)

See Price Book page 23.

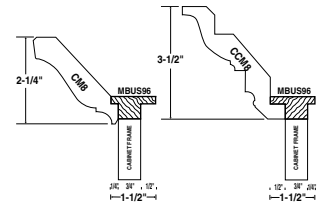
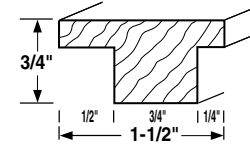


- Birch also available in glaze finishes
- White Oak and Birch offered in individual 8' lengths or cartons of 10 (80')

MOLDING BUILD-UP STRIP

- MBUS96
- MBUS96-6

See Price Book page 24.

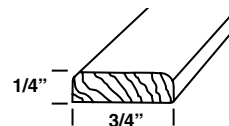


- Unfinished soft wood
- Designed to make installing Classic Crown Molding and Crown Molding easier by attaching directly to strip eliminating face nailing to cabinet
- "V" notch on back of Crown Molding required
- Offered in individual 8' lengths or cartons of 6 (48')

NARROW BATTEN MOLDING

- NBM8
- NBM8-20
- NBM8P (Print molding)
- NBM8P-20 (Print molding)

See Price Book page 23.

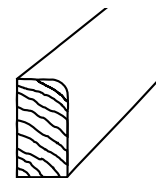


- Print molding is 1/8" x 11/16"
- Available in all options listed above
- Offered in individual 8' lengths or cartons of 20 (160')

COUNTERTOP MOLDING

- CTR8
- CTR8-10

See Price Book page 24.



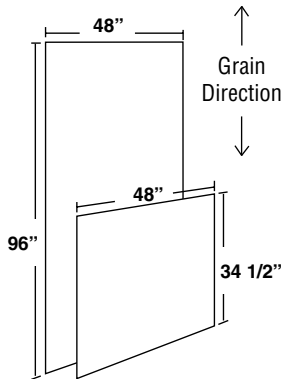
- Available in solid wood White Oak and Birch only
- Offered in individual 8' lengths or cartons of 10 (80')



PANELS

PANEL BACKER — PAPER LAMINATE

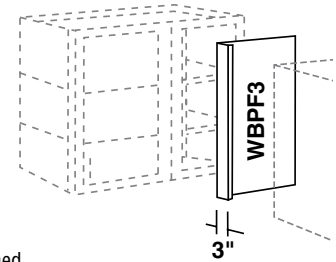
PB4896P	48" x 96"	See Price Book page 24.
PB4896P-2	48" x 96"	
PB4834P	48" x 34-1/2"	
PB4834P-2	48" x 34-1/2"	



- 9/64" (.142) thick Medium Density Fiberboard (MDF) panel with laminate on one side
- Offered individually or 2 per carton

WALL BLIND PANEL WITH FILLER (30" and 42" HIGH)

WBPF3-30	See Price Book page 25.
WBPF3-42	



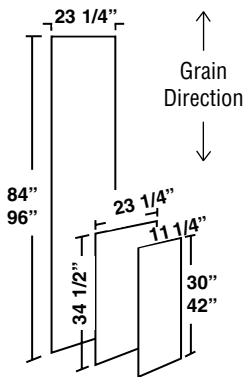
- Used with WBC cabinets to provide clearance in the corner and cover the face frame opening of blind area
- Trim length as required
- 3" wide solid hardwood stile attached to panel. Matches finish ordered
- 1/4" thick engineered wood panel laminated on side against cabinet

END PANEL — PAPER LAMINATE

WALL	See Price Book page 24.
WEP30P	11-1/4" x 30"
WEP30P-10	11-1/4" x 30"
WEP42P	11-1/4" x 42"
WEP42P-10	11-1/4" x 42"

BASE	
BEP34P	23-1/4" x 34-1/2"
BEP34P-10	23-1/4" x 34-1/2"

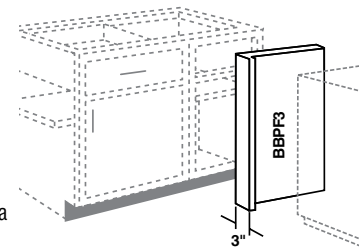
TALL	
TEP84P	23-1/4" x 84"
TEP84P-2	23-1/4" x 84"
TEP96P	23-1/4" x 96"
TEP96P-2	23-1/4" x 96"



- 9/64" (.142) thick Medium Density Fiberboard (MDF) panel with laminate on one side
- WEP30P, WEP42P and BEP34P offered individually or 10 per carton
- TEP84P and TEP96P offered individually or 2 per carton

BASE BLIND PANEL WITH FILLER

BBPF3	See Price Book page 25.
-------	-------------------------

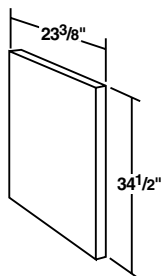


- Used with BBC cabinets to provide clearance in the corner and cover the face frame opening of blind area
- 3" wide solid hardwood stile attached to panel. Matches finish ordered
- 1/4" thick engineered wood panel laminated on side against cabinet

SINK FRONT END PANEL (34-1/2" HIGH, 23-3/8" DEEP)

SFEP	See Price Book page 25.
------	-------------------------

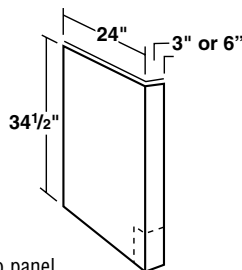
- Use with "Cabinet Front Only" sink base on end of run
- Trimmable
- 3/8" thick engineered wood panel
- Notch in field for toe space
- Outside matches finished ordered; inside is Natural Maple



BASE END PANEL FILLER (34-1/2" HIGH)

BEPF3	See Price Book page 25.
BEPF6	

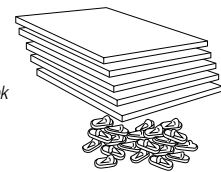
- Trimmable
- Notch in field for toe space
- 3" or 6" wide solid hardwood stile attached to panel
- 3/8" thick engineered wood panel laminated both sides
- Panel outside matches finish ordered; inside is Natural Maple



VANITY LINEN SHELF KIT — 21" DEEP

5/8" thick	3/4" thick
VLSK1521-5/8	VLSK1521-3/4
VLSK1821-5/8	VLSK1821-3/4
VLSK2421-5/8	VLSK2421-3/4
VLSK3621-5/8	VLSK3621-3/4

See Price Book page 25.

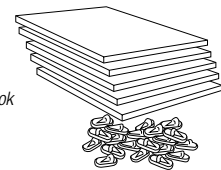


- Kit includes 5 engineered wood laminate shelves and 20 shelf supports
- Available in Natural Maple
- For use in Vanity Linen Cabinets (VLC)

UTILITY SHELF KIT — 12" AND 24" DEEP

5/8" thick	3/4" thick
USK1512-5/8	USK1512-3/4
USK1812-5/8	USK1812-3/4
USK2412-5/8	USK2412-3/4
USK3612-5/8	USK3612-3/4
USK1524-5/8	USK1524-3/4
USK1824-5/8	USK1824-3/4
USK2424-5/8	USK2424-3/4
USK3624-5/8	USK3624-3/4

See Price Book page 25.



- Kit includes 5 engineered wood laminate shelves and 20 shelf supports
- Available in Natural Maple
- For use in utility (U) cabinets

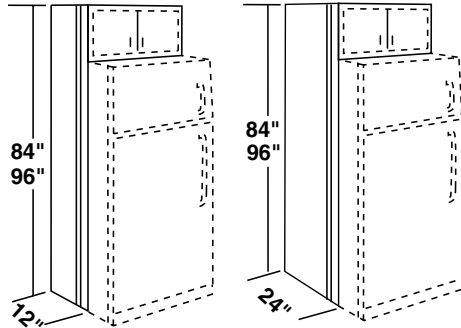
ACCESSORIES

**REFRIGERATOR END PANEL WITH ATTACHED FILLER
(12" or 24" DEEP, 84" or 96" HIGH)**

12" DEEP
REPF1-5-1284
REPF1-5-1296

24" DEEP
REPF1-5-2484
REPF1-5-2496

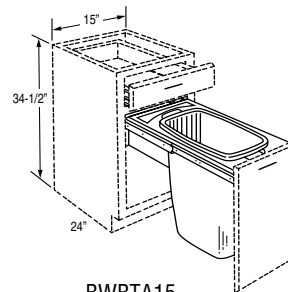
See Price Book
page 26.



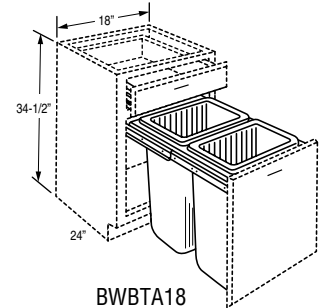
- Trimmable
- 1-1/2" solid wood stile attached to panel
- 1/2" thick engineered wood panel laminated both sides
- Panel outside matches finish ordered; inside is Natural Maple

BASE WASTEBASKET TRASH ASSEMBLY

BWBTA15 See Price Book
page 28.
BWBTA18



BWBTA15

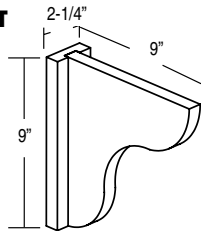


BWBTA18

- Uses door from existing cabinet
- 15" includes one removable white plastic 35 qt. trash bin and one plastic tray for garbage bag storage
- 18" includes two removable white plastic 35 qt. trash bins
- One assembly per carton

**COUNTERTOP SUPPORT BRACKET
(9" HIGH)**

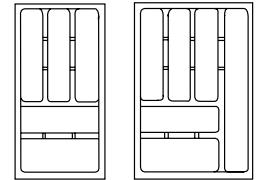
CTSB See Price Book
page 26.
CTSB-2



- 3/4" thick solid hardwood
- Offered individually or 2 per carton

CUTLERY DRAWER INSERT

CDI15 See Price Book
page 28.
CDI15-10
CDI18
CDI18-10



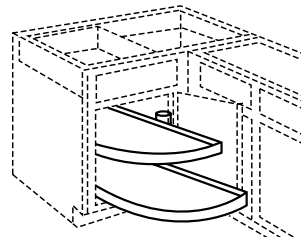
CDI15

CDI18

- White polymer one piece trays
- CDI15 fits B15, BD15-3D & -4D
- CDI18 fits B18, BD18-3D & -4D
- Offered individually or 10 per carton

BASE SWING OUT SHELVES

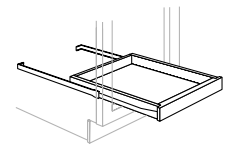
BSOS42 See Price Book
page 28.
BSOS45



- BSOS42 fits BBC42/45 and BSOS45 fits BBC45/48 and BBC48/51 cabinets
- Two white plastic half-moon shelves that swing out independently
- Bottom shelf slides forward for easy access
- Universal for L or R blind applications
- Weight capacity: BSOS42 — 38 lbs.; BSOS45 — 48 lbs.
- One assembly per carton

ROLL-OUT TRAY KIT

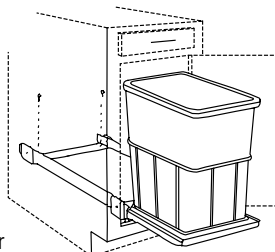
ROT1524 ROT3024B See Price Book
page 28.
ROT1824 ROT3624B
ROT2424 ROT4524



- Solid hardwood construction tray core, natural finish
- ROT's fit in 24" deep base and utility cabinets
- Kit includes guides and screws
- Not available in special depths
- One kit per carton

BASE WASTEBASKET FLOOR MOUNT KIT

BWBFMK-1 See Price Book
page 28.

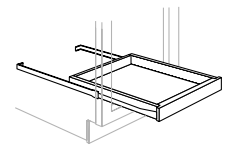


- Can be used in cabinets B15 and wider
- Easy to clean removable white plastic bin
- Bin has 35 qt. capacity
- Overall size is 10-1/2" wide x 19-1/2" high x 22" deep
- One assembly per carton

BASE AND VANITY TRAY KITS

BASE CABINETS	VANITY CABINETS	CABINET WIDTH
BTK12	VTK12	12
BTK15	VTK15	15
BTK18	VTK18	18, 36
BTK21	VTK21	21, 42
BTK24	VTK24	24, 48
BTK27B	VTK27B	27B
BTK30B	VTK30B	30B
BTK33	VTK33	33
BTK39	VTK39	39
BTK45	VTK45	45
BTK36/39		BBC36/39

See Price Book
page 28.



- Kit includes guides and screws
- BTK's fit in 24" deep base and utility cabinets
- VTK's fit in 21" vanity and vanity linen cabinets
- Natural Maple laminate
- Not available in special depths
- One kit per carton

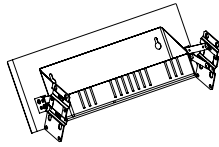


ACCESSORIES

UTILITY TRAY KIT

UTK15 UTK27
UTK15-10 UTK27-10

See Price Book pages 28 and 29.

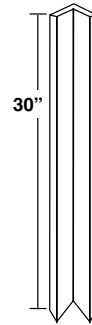


- Uses drawer front from existing cabinet
- Kit includes fully-concealed self-closing hinges (2 per tray), installation hardware and instructions
- UTK15 includes two 11" wide white polymer trays for use in cabinets 15" and wider
- UTK27 includes one 22" wide white polymer tray for use in cabinets 27" thru 39" wide
- Offered individually or 10 per carton

WALL FILLER CORNER

WFC3-30
WFC3-30-6

See Price Book page 27.

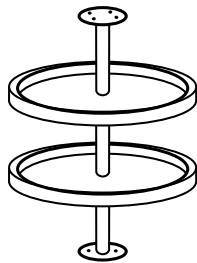


- Used to provide clearance in 90° corners
- 3" x 3" face surfaces
- For use with wall, base and vanity cabinets. Trim length as required
- For base and vanity cabinet applications, order Corner Filler Toekick (CFTK3) separately
- Offered individually or 6 per carton

LAZY SUSAN SHELF KIT

LS2

See Price Book page 29.

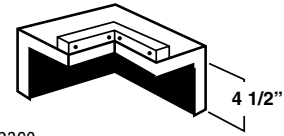


- Two 18" diameter white plastic independently revolving shelves
- Includes center post, mounting hardware and Instructions
- Center post adjusts from 26" to 31" in height
- Designed to fit WA2430, 36 and 42 wall angle cabinets and the PWA2430 peninsula cabinet
- WA36 and WA42 cabinets require top adjustable shelf to be installed for post mounting
- One assembly per carton

CORNER FILLER TOEKICK

CFTK3
CFTK3-6

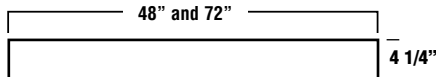
See Price Book page 29.



- Used in 90° corners to fill the toe space opening created by using the Wall Filler Corner (WFC3-30) with base and vanity cabinets
- Order WFC3-30 separately
- Offered individually or 6 per carton

VALANCE — CONTEMPORARY (48" and 72")

V48C See Price Book page 26.
V72C

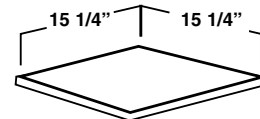


- Solid wood, 3/4" thick
- Square edges
- Trimmable
- One per carton

WALL CORNER CLOSURE

WCC
WCC-10

See Price Book page 29.



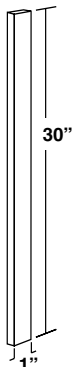
- 1/2" thick laminated engineered wood
- Specify Natural Maple
- Offered individually or 10 per carton

FILLERS

1" Wall Filler

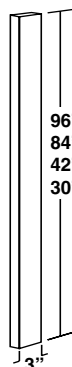
See Price Book page 26.

WF1-30
WF1-30-6



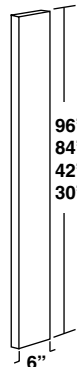
3" Tall & Wall Fillers

TF3-96
TF3-96-6
TF3-84
TF3-84-6
WF3-42
WF3-42-6
WF3-30
WF3-30-6



6" Tall Filler

TF6-96
TF6-96-6
TF6-84
TF6-84-6
WF6-42
WF6-42-6
WF6-30
WF6-30-6

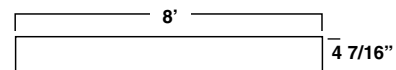


- Finished on face surface only
- Offered individually or 6 per carton

TOEKICK COVER — LAMINATE

TKCL8
TKCL8-25

See Price Book page 27.

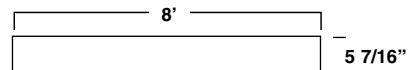


- 1/8" thick laminated hardboard
- Specify finish
- Offered individually or 25 per carton

TOEKICK COVER UNIVERSAL ACCESS — LAMINATE

TKCUL8

See Price Book page 27.



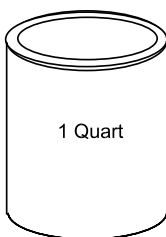
- 1/8" thick laminated hardboard
- Specify finish
- One per carton

REPAIR AND REPLACEMENT PARTS

QUARTS

- QST • Quart of Stain
- QCST • Quart of Clear Sealer Topcoat

See Price Book
page 27.



WARNING: Review MSDS before use. Standard stain finishes include sealer coat and topcoat. Glazed finishes require glaze to be applied over topcoat then second topcoat must be applied.

FILL STICK

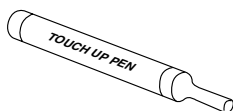
- FS
- FS-12 See Price Book
page 27.



- Specify Finish
- Each or 12 per carton

TOUCH-UP PEN

- TP
- TP-12 See Price Book
page 27.



- Specify Finish
- Each or 12 per carton

TOUCH-UP KIT

- TUK See Price Book
page 27.

- Kit includes 1-Fill Stick, 1-Touch-up Pen and 1-Blend-it
- Specify Finish

INSTALLATION SCREWS

- INSTALLSCREWS - 100 See Price Book
page 29.

- #10 x 2-1/2" No. 2 square drive washer head screw
- Used to secure cabinets to the wall and face frames together
- 100 screws per carton

INSTALLSCREWPW-6

- #10 x 3-1/2" No. 2 square drive washer head screw
- Used to secure Peninsular Wall (PW) cabinets to ceiling joists thru the face frame rail
- 6 screws per carton (enough for one typical cabinet installation)

BACK PLUGS

- BACKPLUG2H/125 See Price Book
page 29.
- BACKPLUGH2H/10000

- Clear plastic plugs for base and vanity cabinet back panel factory drilled holes
- Each plug fills the pair of 10mm diameter holes
- 125 or 10,000 per carton



Collins, Homestead and Colony

PREP FOR INSERT DOORS

- Doors are shipped with appropriate number of hinges and mounting screws
- Glass (insert) is not included
- Use clear silicone to install glass, not included

See Product Specifications Book page 29.

FRAME ONLY door

CODE	SIZE (width x height)
PF1628	16-1/4" x 28"
PF1634	16-1/4" x 34"
PF1640	16-1/4" x 40"
PF1528	14-3/4" x 28"
PF1534	14-3/4" x 34"
PF1540	14-3/4" x 40"

Cabinets the Door Will Fit

BK1830, W1830, W3630, WR1830, PW1830, PW3630, *U1896, *U189624, *VLC1896 and *VLC189618
 BK1836, W1836 and W3636
 BK1842, W1842 and W3642
 WA2430, WA2730, WCA1230, W3330, WBC30/3330, and *OCU3396
 WA2436, WA2736, WCA1236, W3336 and WBC30/3336
 WA2442, WA2742, WCA1242, W3342 and WBC30/3342

MULLION door

CODE	SIZE (width x height)
PM1628	16-1/4" x 28"
PM1634	16-1/4" x 34"
PM1640	16-1/4" x 40"
PM1528	14-3/4" x 28"
PM1534	14-3/4" x 34"
PM1540	14-3/4" x 40"

Cabinets the Door Will Fit

BK1830, W1830, W3630, WR1830, PW1830, PW3630, *U1896, *U189624, *VLC1896 and *VLC189618
 BK1836, W1836 and W3636
 BK1842, W1842 and W3642
 WA2430, WA2730, WCA1230, W3330, WBC30/3330, and *OCU3396
 WA2436, WA2736, WCA1236, W3336 and WBC30/3336
 WA2442, WA2742, WCA1242, W3342 and WBC30/3342

MULLION Light Configuration

28" high doors - 2 across x 3 down
 34" and 40" high doors - 2 across x 3 down

*Top door(s) only

MERILLAT CABINETS

Merillat believes that by making better use of the nature's hardwood we can provide a quality product that is value priced. The wide range of wood colors and grain variations are natural characteristics of the wood and not a defect. Merillat Cabinets makes better use of our natural resources and creates beautiful hardwood products.

CABINET FRAMES

3/4" thick, kiln dried, solid hardwood joined with mortise and tenon or dowel construction.

END PANELS

3/8" thick industrial grade engineered wood is permanently finished on 2 sides with a laminate resistant to water and most household chemicals. End panels are machined to accept tops, bottoms, and backs. Ends are drilled to accept adjustable shelves.

CABINET TOPS & BOTTOMS

1/2" thick industrial grade engineered wood is permanently finished on 2 sides with a laminate resistant to water and most household chemicals.

FLOORS

1/2" thick industrial grade engineered wood is permanently finished on 1 side with a laminate resistant to water and most household chemicals.

SHELVES

5/8" thick industrial grade engineered wood is permanently finished on 2 sides for full depth shelves and 1 side for half-depth base cabinet shelving with a laminate resistant to water and most household chemicals. Front edge is edge banded with melamine banding. Wall and Base cabinets have adjustable shelves supported by adjustable shelf clips.

Shelves in base cabinets 27" wide and wider have a matching full-length support apron secured to the underside near the front edge for additional support.

WALL BACKS

3/8" thick engineered wood finished on one side with a laminate resistant to water and household chemicals. Full-length dadoes in back allow tops and bottoms to be captured, stapled and glued.

BASE BACKS

1/4" thick engineered wood finished on one side with a laminate resistant to water and household chemicals. Extends to full-length floor.

WALL HANGRAILS

3/8" thick engineered wood full-length across top and bottom secured with staples.

BASE HANGRAILS

11/16" solid pine or Douglas-fir. Ends are rabbeted to join cabinet ends. Bottom edge is rabbeted to join back.

DRAWER GUIDES

75 pound rated drawer guide system, side mounted, 3/4 extension with self adjusting mounting brackets at rear. Drawer slides are fastened to the drawer box with screws.

DRAWER FRONTS

Slab drawer fronts are 3/4" solid hardwood.

DRAWER BOX

1/2" thick sides, fronts and backs of industrial grade engineered wood. Top edges are finished with melamine banding. Side surfaces are finished with a laminate resistant to water and most household chemicals. 1/4" thick engineered wood bottom panel is finished on one side with same laminate. Laminate/edgebanding finish is Natural Maple.

Drawer sides are rabbeted to join the drawer box fronts and backs. Each corner is joined with white glue and pinned.

ALL WOOD DRAWER BOX OPTION

5/8" solid wood sides with rabbeted joints, nominal 1/8" plywood bottom and side mount 3/4 extension drawer slides.

TOEKICK

1/2" thick industrial grade engineered wood. Toekick extends from floor to bottom of cabinet, closing the toe kick area. Toekick cover is required and sold separately.

WOOD FINISHES

Wood component surfaces are sanded to begin the finishing process. Stain is applied and oven cured. A sealer coat is applied, oven cured and sanded. A high solids, top coat is applied. Each component is individually inspected prior to release from the finishing department. The conversion varnish topcoat is formulated to minimize the effects of ultraviolet on the finish.

HIGHLIGHT GLAZING

Glaze applied to Colony and Homestead Birch doors and drawer fronts on cabinets. For a list of available Glaze/Finish options see page 4.

HINGES

All doors have 2-way European style, fully concealed, self closing hinges with a 105° opening. **NOTE:** All butt door cabinets have hinges with 6-way adjustment capability. Some corner cabinets using concealed hinges will have hinges with wider opening capacity for improved access.

CERTIFIED CABINET

Merillat Cabinets carry the seal of the Kitchen Cabinet Manufacturer Association (KCMA) and exceeds or meets the recommended minimum construction and performance standards outlined by the American National Standard Institute (ANSI/KCMA) Specification A161.1.



Masco Builder Cabinet Group reserves the right to change design, specifications and materials as conditions require and as improvements are developed without being obligated to incorporate such changes into products of prior manufacture.



ONE YEAR LIMITED WARRANTY

Masco Builder Cabinet Group ("Warrantor") is proud of our products and stand behind our quality and workmanship.

As with other natural materials, wood is affected by environmental factors such as natural and artificial lighting, moisture and relative humidity. Darkening or mellowing of the wood can be expected and is a natural part of wood as it ages. Each wood specie also exhibits its own distinctive patterns and characteristics that add to its natural beauty. These variations in color and characteristics are not considered imperfections or defects. This warranty does not cover the natural aging and darkening of wood color, nor does it apply to the inherent growth characteristics of wood. Please review and abide by all storage and installation instructions.

WARRANTY PERFORMANCE

Should any of the Products prove defective under normal household use during the period of one year from date of purchase from an authorized dealer, the defective parts will at our option either be repaired or replaced. In keeping with its continuous product improvement policy, we reserves the right to replace defective parts with parts of equal or greater value.

WARRANTY COVERAGE

Merillat cabinets, manufactured and assembled by the Masco Builder Cabinet Group and purchased from an authorized dealer ("Products"), are warranted to you the original purchasing consumer for a period of ONE YEAR from the date of purchase against defective materials or workmanship. This warranty is not transferable.

This warranty does not cover removal, installation, labor or transportation costs to Masco Builder Cabinet Group of the defective Products. Nor does this warranty cover any product used or installed in connection with the cabinets or cabinetwork, such as plumbing fixtures, gas or electrical appliances, or countertops. You shall provide for the cost of the shipment, if deemed necessary, of repaired or replacement products to us. This warranty does not apply to damages or defects related to improper handling, storage, misuse, alterations, installation or Product used for any purpose other than normal household use. Slight color variations for repair or replacement parts and color variations that may occur over time are not considered defects under this warranty.

TO THE EXTENT PERMITTED BY LAW, THE Masco Builder Cabinet Group BE LIABLE FOR LOSS OF USE OF THE PRODUCTS, CONSEQUENTIAL, INDIRECT OR INCIDENTAL DAMAGES RESULTING FROM THE USE, INSTALLATION, PERFORMANCE OR FAILURE OF ANY PRODUCTS. Some provinces and some states do not allow the exclusion or limitation of incidental or consequential damages, so the above exclusion may not apply to you.

TO THE EXTENT PERMITTED BY LAW, ANY IMPLIED WARRANTIES, INCLUDING THE IMPLIED WARRANTIES OF MERCHANTABILITY AND OF FITNESS FOR A PARTICULAR PURPOSE, ARE LIMITED TO THE DURATION OF THIS EXPRESS WARRANTY. Some states do not allow limitations on how long an implied warranty lasts, so the above limitation may not apply to you.

This warranty gives you specific legal rights, and you may also have other rights that vary from state to state and from province to province.

WARRANTY CLAIMS

To submit a warranty claim, please write a letter explaining the defect with a copy of your proof of purchase to:

Merillat
Warranty Department
Masco Builder Cabinet Group
P.O. Box 1946
Adrian, MI 49221

Masco Builder Cabinet Group is not responsible for merchandise returned to us without proper written authorization from us.

DENOVA BEGINNINGS™ COUNTERTOP WARRANTY RESIDENTIAL 1 YEAR LIMITED WARRANTY

DeNova™ Beginnings™ Countertop Limited Warranty

Masco Builder Cabinet Group warrants to the original consumer purchaser that our DeNova™ Beginnings™ Countertops will be free from defects in material and workmanship under normal use for a period of ONE (1) YEAR from the date of purchase. This limited warranty is not transferable. No changes or modifications can be made to this warranty except by an officer of Masco Builder Cabinet Group.

DeNova™ Natural Granite and Quartz Countertops are created by nature with their own distinctive patterns and characteristics. Exact color match to store samples at point of purchase cannot be guaranteed. This warranty does not cover the natural characteristics of stone, which include but are not limited to, color variations, surface marks and blemishes.

Warranty Requirements

To be eligible for this warranty, you must

- purchase the countertop from an authorized DeNova™ supplier for your own personal use;
- have it installed for indoor use as a horizontal countertop according to the DeNova™ Beginnings™ Installation Guide;
- maintain the countertop in accordance with the DeNova™ Care & Maintenance Guide; and
- not remove the countertop after its original installation.

Additional copies of the Care & Maintenance Guide or Installation Guide may be requested by calling Customer Care at 866-850-8557 or visiting www.DeNovasurfaces.com.

How To Get Service

To obtain performance under this warranty, you must contact the DeNova supplier and report, in writing, all defects claimed. If you purchased at a retailer, you must provide the original retail sales or other documentation acceptable to Masco Builder Cabinet Group. If you have difficulty obtaining assistance, write to DeNova™ Warranty Department, Masco Builder Cabinet Group, P.O. Box 1946, Adrian, Michigan 49221.

Manufacturer's Obligation Under Warranty

Masco Builder Cabinet Group may elect to repair or to replace any defective DeNova™ product covered by our warranty. Our warranty does not cover defects caused by misuse, abuse, negligence, alterations, outdoor use, commercial use, or improper installation, storage and handling, or failure to follow the DeNova™ Care & Maintenance Guide. "Commercial use" includes, but is not limited to, use in an apartment, store, office or other place of business. The visibility of any seams and seam failure due to settling or structural issues is not covered.

THIS WARRANTY EXCLUDES ANY INCIDENTAL OR CONSEQUENTIAL DAMAGES SUCH AS THE COST OF LABOR OR OTHER COSTS OF REMOVAL OR INSTALLATION. Some provinces and some states do not allow the exclusion or limitation of incidental or consequential damages so the above limitation or exclusion may not apply to you.

From time to time, we will change design, specifications and materials as conditions require and improvements are developed, but we have no obligation to incorporate such changes in products we previously manufactured.

TO THE EXTENT PERMITTED BY LAW, ANY IMPLIED WARRANTIES, INCLUDING THE IMPLIED WARRANTIES OF MERCHANTABILITY AND FITNESS FOR A PARTICULAR PURPOSE, ARE LIMITED TO THE DURATION OF THIS EXPRESS WARRANTY. Some provinces and states do not allow limitations on how long an implied warranty lasts, so the above limitation may not apply to you. This warranty gives you specific legal rights, and you may also have other rights which vary from state to state and from province to province.

PRODUCT CODE ABBREVIATIONS AND INDEX

PRODUCT CODE	DISCRPTION	PAGE	PRODUCT CODE	DISCRPTION	PAGE
ACM	Angle Corner Molding	25	UBLS	Universal Base Lazy Susan	18
B	Base Cabinet	14, 15	UBSF	Universal Sink Front	18
BBC	Base Blind Corner	16	UF	Utility Front	19
BCA	Base Corner Angle	16	USFCK	Universal Sink Front Cabinet Kit	18
BCFS	Base Corner Fixed Shelf	16	USK	Utility Shelf Kit	26
BCRB	Base Corner Revolving Builder	16	UTK	Utility Tray Kit	27
BD -3D	Base Three Drawer	15	V	Valance	28
BD -4D	Base Four Drawer	15	VB--	Vanity Bowl	21, 23,
BEP	Base End Panel	26	VB--	Vanity Base	21
BEPF	Base End Panel Filler	26	VCD--	Vanity Combination Drawer	22
BK	Bookcases	13	VD -3D	Vanity Drawer — 3 Drawer	23
BLS	Base Lazy Susan	16	VLSK	Vanity Linen Shelf Kit	26
BSOS	Base Swing Out Shelves	27	VSB--	Vanity Sink Base	21, 22
BTK	Pull-Out Tray Kit	27	VT	DeNova™ Beginnings™ Vanity Countertops	24
BWBFMK	Base Wastebasket Floor Mount Kit	27	VTK	Vanity Tray Kit	27
BWBT	Base Wastebasket Topmount	15	VWB	Vanity Wall Boutique	23
BWBTA	Base Wastebasket Trash Assembly	27	VWR	Vanity Wall Recessed	23
CCM	Classic Crown Molding	25	W	Wall Cabinets	.6 - 8, 10 - 12
CDI	Cutlery Drawer Insert	27	WA	Wall Angle	6 - 8
CFTK	Corner Filler Toekick	28	WBC	Wall Blind Corner	6 - 9
CM	Crown Molding	25	WCA	Wall Corner Angle	.6 - 9, 11
CSM	Crown Soffit Molding	24	WCC	Wall Corner Closure	28
CTR	Countertop Molding	25	WCD	Wall China Display	12
CTSB	Countertop Support Bracket	27	WEP	Wall End Panel	26
DKDDT	Desk Knee Deep Drawer Trimmable	23	WEPF	Wall End Panel Filler	26
DKDT	Desk Knee Drawer Trimmable	23	WF	Wall Filler	28
DOCK	Double Oven Cabinet Kit	20	WFC	Wall Filler Corner	28
ICM	Inside Corner Molding	24	WL	Wall Lattice	12
LS2	Lazy Susan Shelf Kit	27	WMSC	Wall Microwave Shelf Cabinet	12
MBU	Molding Build-Up Strip	25	WR	Wall Refrigerator 24" Deep	.8, 10 - 12,
NBM	Narrow Batton Molding	25	WSM	Wide Scribe Molding	25
OCSP	Oven Cabinet Support Platform	20			
OCU	Oven Cabinet Universal	20			
ODK	Oven Drawer Kit	20			
OSC	Outside Corner Molding	25			
PB	Peninsula Base	15			
PB	Panel Backer	26			
PWA	Peninsula Wall Angle	8			
PW	Peninsula Wall	9 - 11			
QR	Quarter Round Molding	24			
REPF	Refrigerator End Panel	26			
ROT	Roll-Out Tray Kit	27			
SB	Sink Base	17			
SBA	Sink Base Angle	17			
SFA	Sink Front Angle	17			
SFDB	Sink Floor Diagonal Bottom	17			
SFEP	Sink Front End Panel	26			
SM8	Scribe Molding	24			
TEP	Tall End Panel	26			
TF	Tall Filler	28			
TKCL	Toekick Cover	28			
TKCLU	Toekick Cover Universal	28			
U	Utility Cabinets – 12" Deep and 24" Deep	19			
UB	Universal Base	18			
UBD	Universal Three Drawers	18			

WOOD CHARACTERISTICS NOTICE

Merillat Cabinets is proud to offer this attractive product to the market. A single door may not show all the variances that are possible in a full kitchen. To avoid any misunderstanding, Merillat Cabinets urges all sales personnel to make sure the characteristics of the materials used are made clear to their buyers.

- ❖ **WALL CABINETS:** 6", 9", 15", 18", 21" and 24".
- ❖ **BOOKCASE CABINETS:** 6", 9", 15", 18", 21" and 24".
- ❖ **BASE CABINETS:** 12"* , 15"* , 18" and 21" (12" & 15" deep base or vanity cabinets do not have drawers and drawer stacks are not offered in 12" and 15" reduced depths)
- ❖ **TALL CABINETS:** 9", 15" & 18"
- ❖ **UB CABINETS:** 18", 21" with drawers
12", 15", 18", and 21" with full-height doors
- ❖ **VANITY CABINETS:** 12", 15" (12" & 15" deep base or vanity cabinets do not have drawers and drawer stacks are not offered in 12" and 15" reduced depths)

***Not all wall, base and tall cabinets can be made in special depths.**

Contact your Customer Service Representative for exceptions.

NOTES

- All special depth wall cabinets will be build with standard adjustable shelving. For example, if the standard wall cabinet comes with an adjustable shelf (or shelves) then the special depth order will be produced with an adjustable shelf (or shelves).
- All special depth base cabinets will be built with standard adjustable shelving. For example, if the standard base cabinet comes with an adjustable shelf then the special depth order will be produced with an adjustable shelf.
- All special depth Utility cabinets will be built with standard adjustable shelving in the upper section. For example, if the standard Utility cabinet comes with an adjustable shelf (or shelves) in the upper section then the special depth order will be produced with an adjustable shelf (or shelves) in the upper section.

SPECIAL DEPTH CABINETS

BOOKCASE WARNING

FURNITURE BOOKCASE WARNING

BOOKCASE (BK) WARNING: Bookcase cabinets are typically subjected to extreme weight. Installation of a cabinet by itself is not recommended unless additional support such as attachment to a soffit or supported by a countertop. See cabinet installation guide for specific instructions. Special depth Bookcase cabinets greater than 12" deep should not be used in wall hung applications. Wall hung applications must be limited to 15 lbs. per square foot of shelf area, not to exceed 50 lbs. per shelf. **FAILURE TO FOLLOW THESE LIMITATIONS COULD CAUSE SERIOUS INJURY.**

Merillat® Basics™ Construction



1. Constructed for daily use (3/8" thick end panels attached with wood-to-wood glue and staples)
2. Moisture Resistant (natural maple laminate interiors)
3. Strong and sturdy frames (1½" wide front, 3/4" thick, solid wood)
4. Reinforced components (¼" thick engineered wood back extends all the way to the floor for added strength to reinforce back corners of the cabinet.)
5. Improved overall strength (solid pine or Douglas fir hang rails for greater rigidity)
6. Structurally square design (four engineered wood gussets hold cabinet square and are mounted in grooves below the top surface; ½" thick)
7. More storage (deeper drawer for 30% more volume)
8. Better alignment (dual captured self-aligning drawer guides)
9. Simple installation (pre-drilled holes in back panel for easy installation of pull out trays)
10. Solid hold (new, locking shelf clips hold shelf securely)
11. Under Shelf Support (cabinets 27" and wider will have support cleat as shown)

Warranty:

- One Year Limited



Follow us.

Our website
www.Merillat.com

Our blog
www.MerillatRoundTable.com

twitter
www.Twitter.com/Merillat

facebook
www.Facebook.com/MerillatCabinets

Actual colors may vary slightly due to printing limitations. For full color accuracy, please visit your Merillat cabinetry professional.
©2010 Masco Cabinetry.
Printed in the USA (2167484) R 08/10

This catalog contains FSC-certified, 30% post-consumer recovered paper that was manufactured using renewable energy. It has been printed exclusively with organic soy-based inks.

